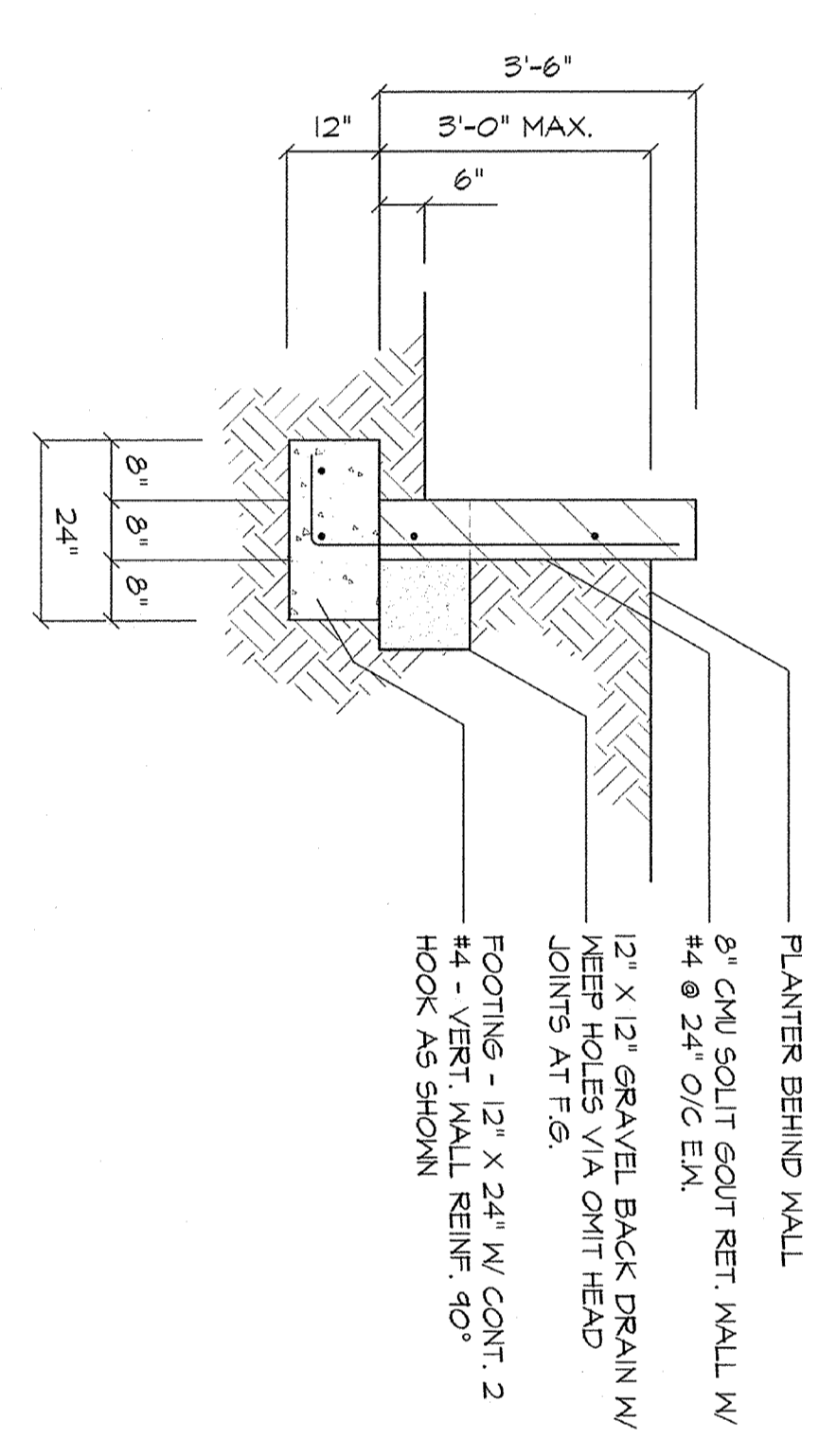
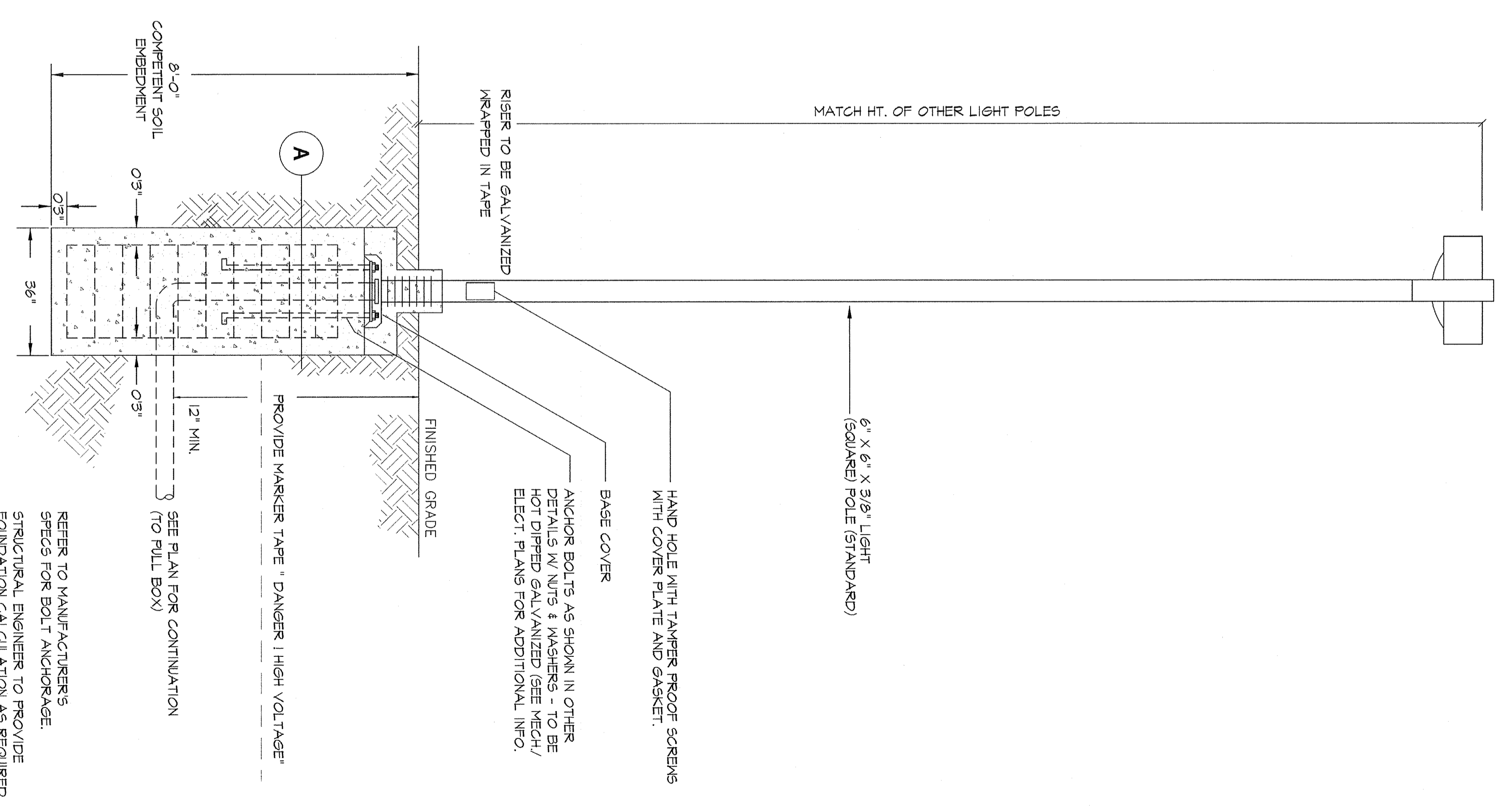
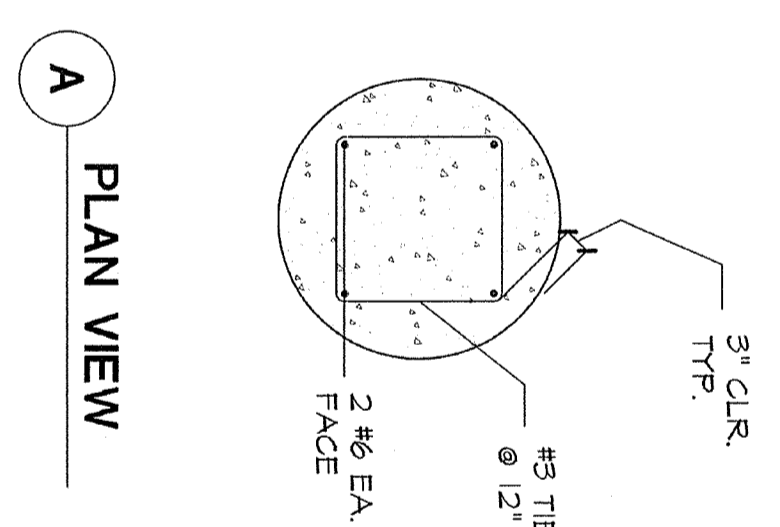


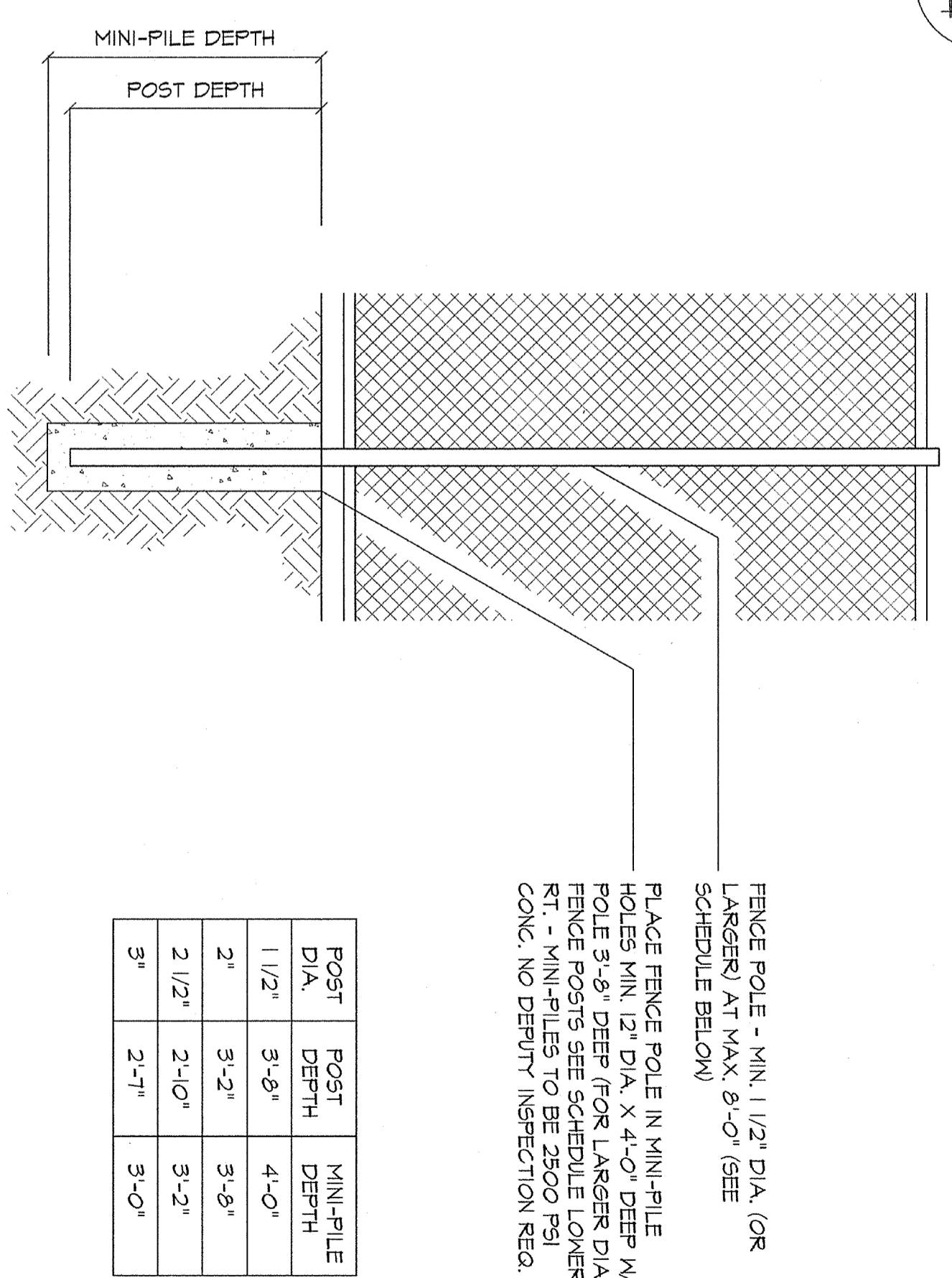
3 WALKWAY RET. WALL DET. SCALE 1/2"=1'-0"



4 PLANTER RET. WALL SCALE 1/2"=1'-0"



1 LIGHT STANDARD AT ISOLATED CONDITION - SEE MECH./ELEC. PLANS SCALE 1/2"=1'-0"



2 ISOLATED FENCE POLE FOUND. DET. SCALE 1/4"=1'-0" AT PLAN AND 1"=1'-0" AT DET.

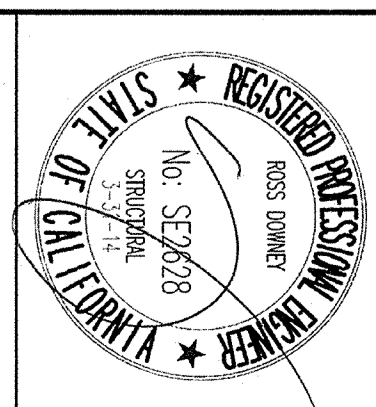
REVISIONS			
NO.	DATE	ITEM	BY
1			

THESE PLANS, DRAWINGS, DESIGNS AND SPECIFICATIONS ARE THE SOLE PROPERTY OF HRD ENGINEERING FOR THE EXCLUSIVE USE OF ITS CLIENTS FOR THIS PROJECT. ANY REUSE OR REPRODUCTION OF THESE PLANS WITHOUT WRITTEN APPROVAL OF HRD ENGINEERING IS STRICTLY PROHIBITED. TRANSFER OF USE NOT PERMITTED WITHOUT WRITTEN APPROVAL. COPYRIGHT © HRD ENGINEERING.

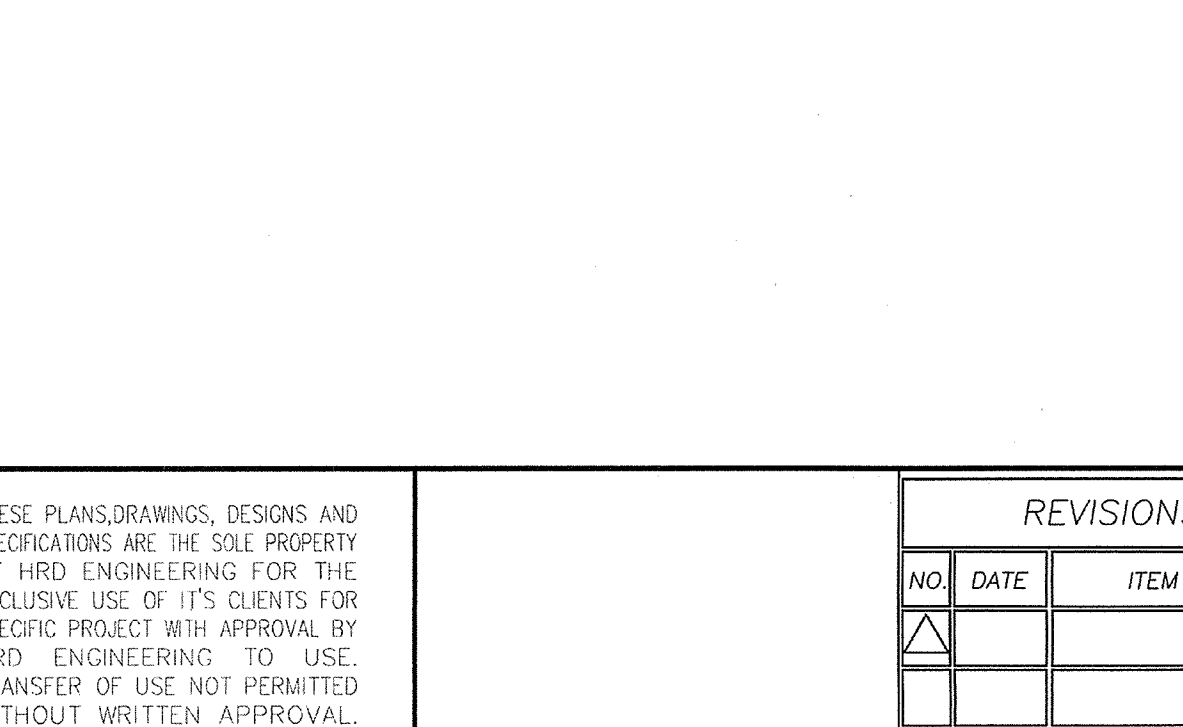
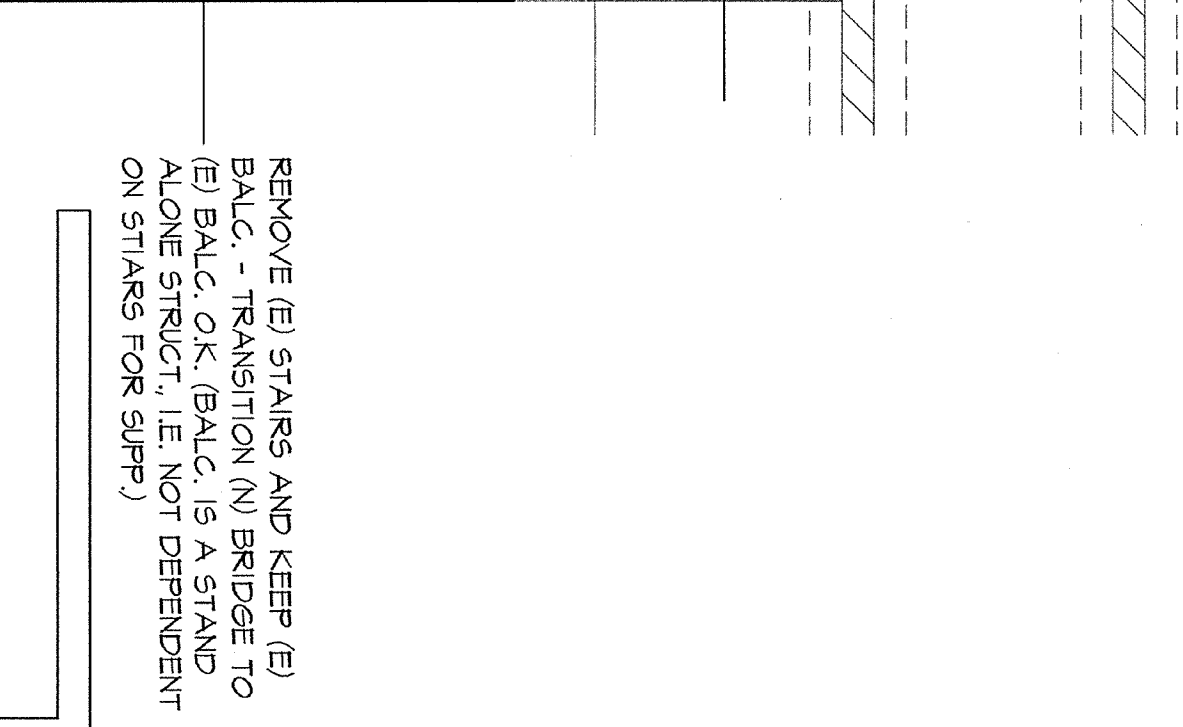
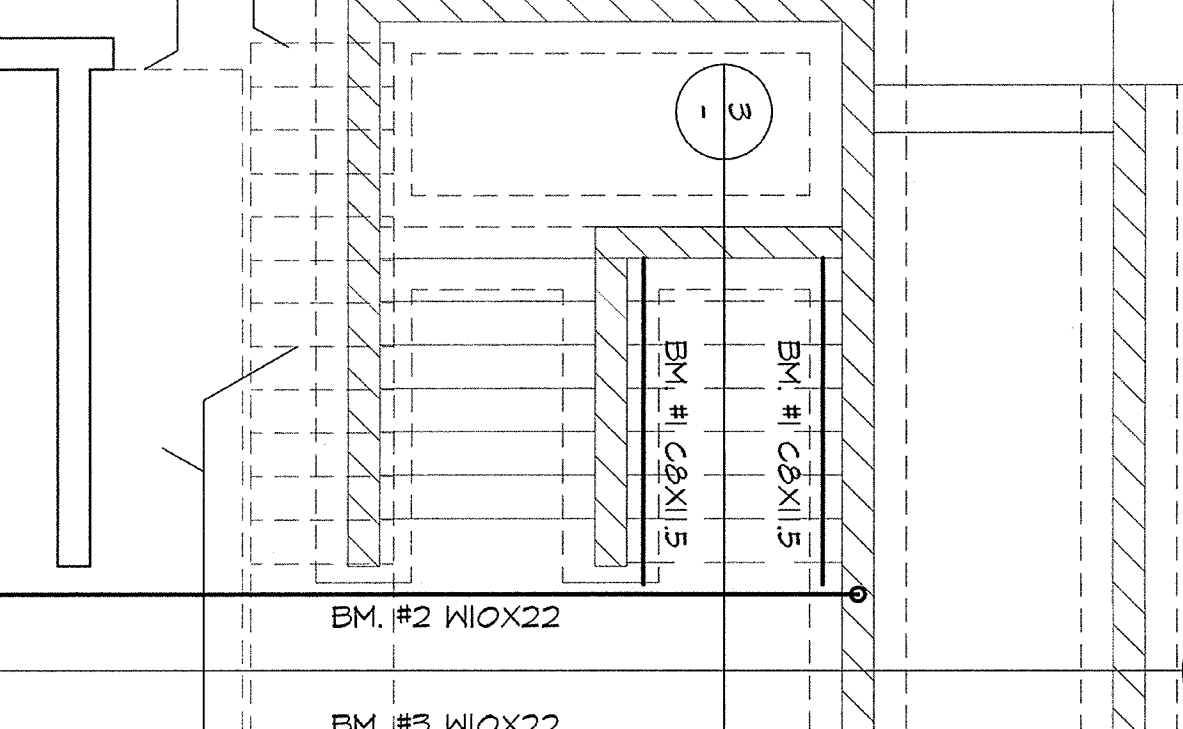
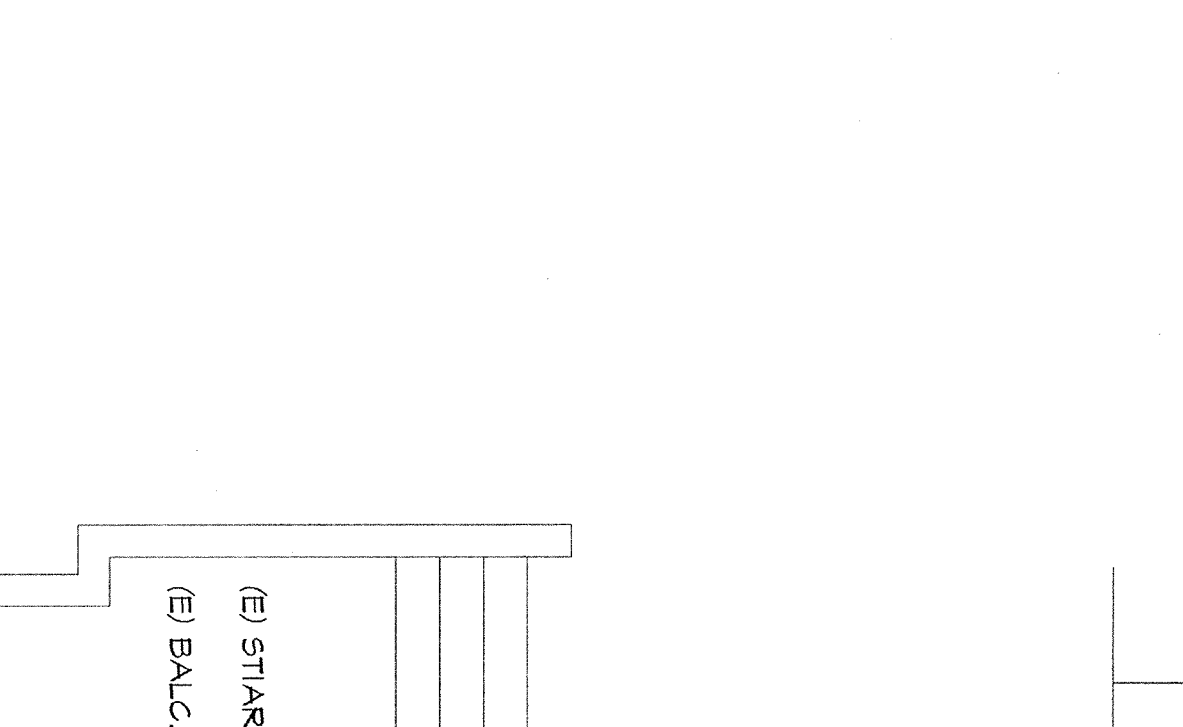
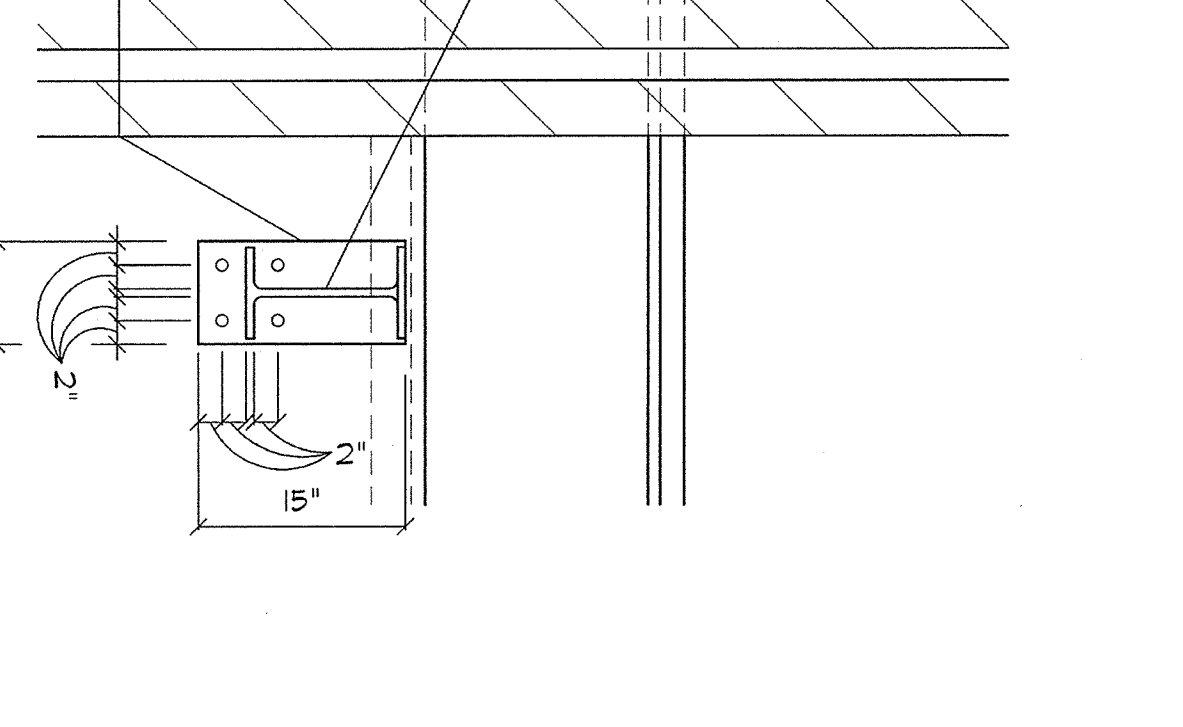
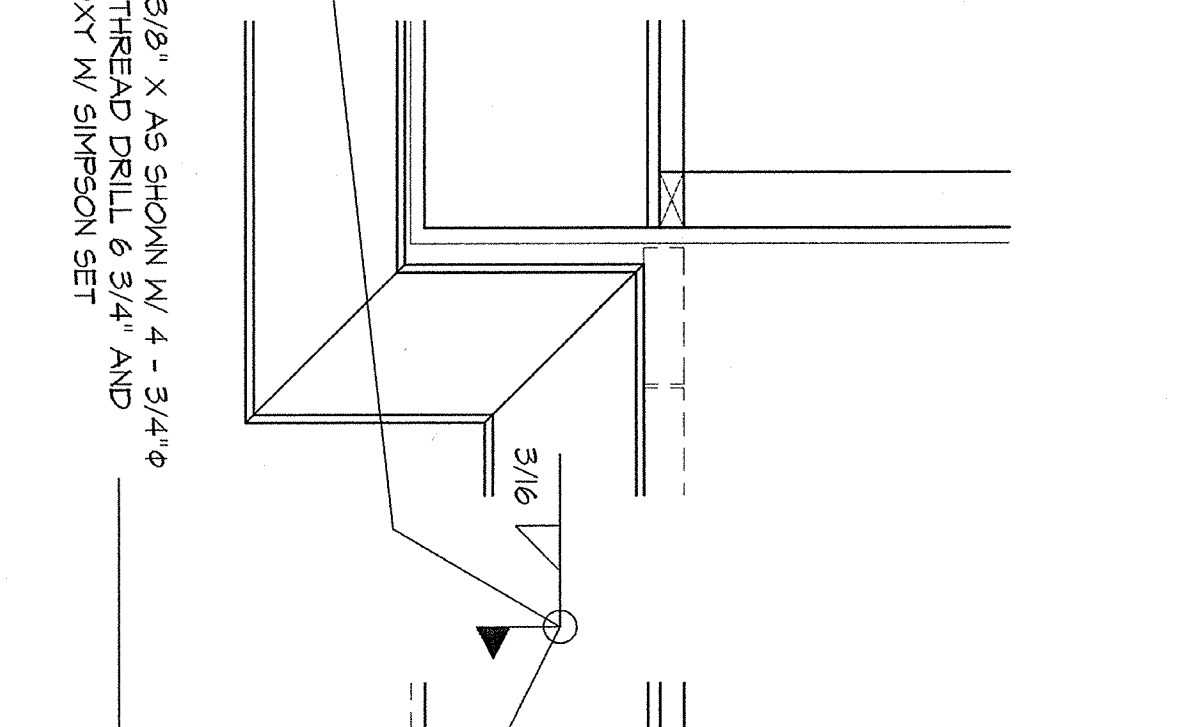
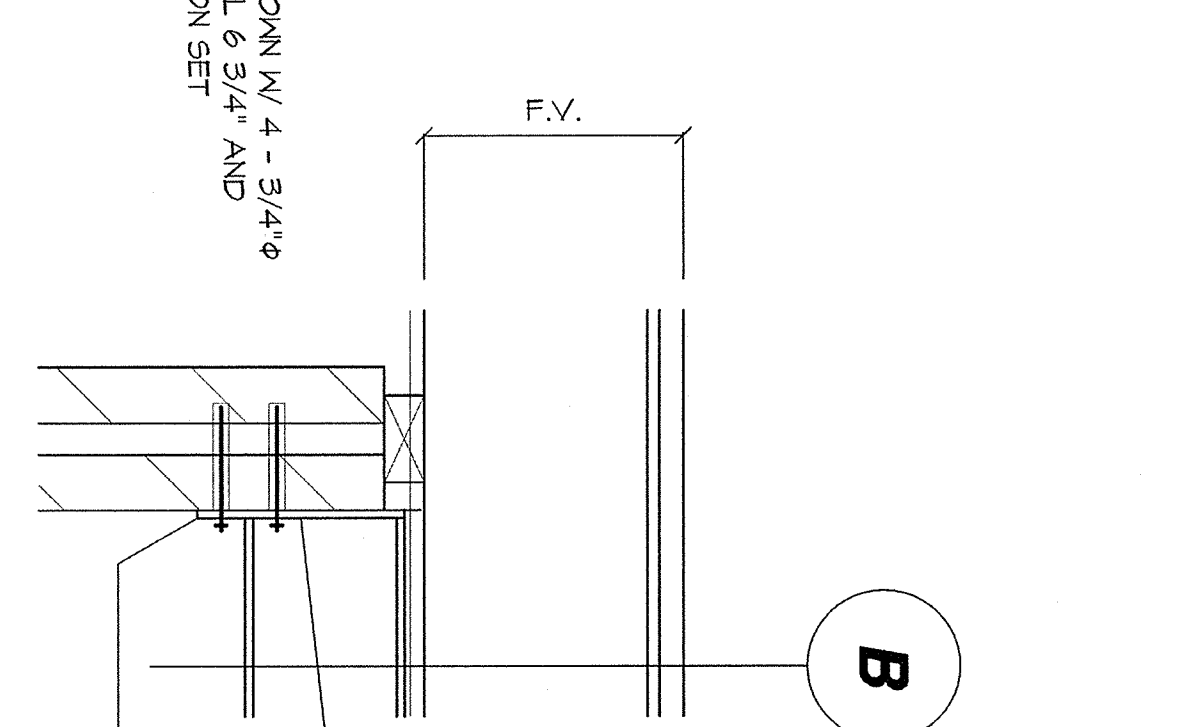
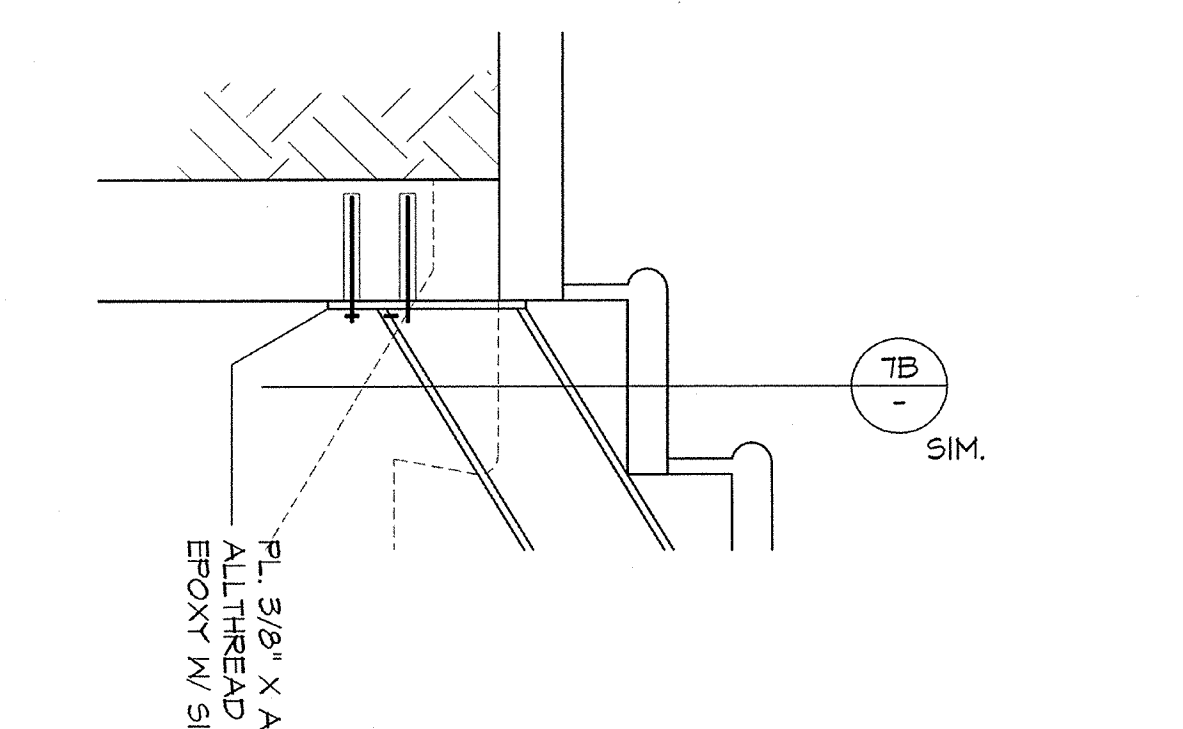
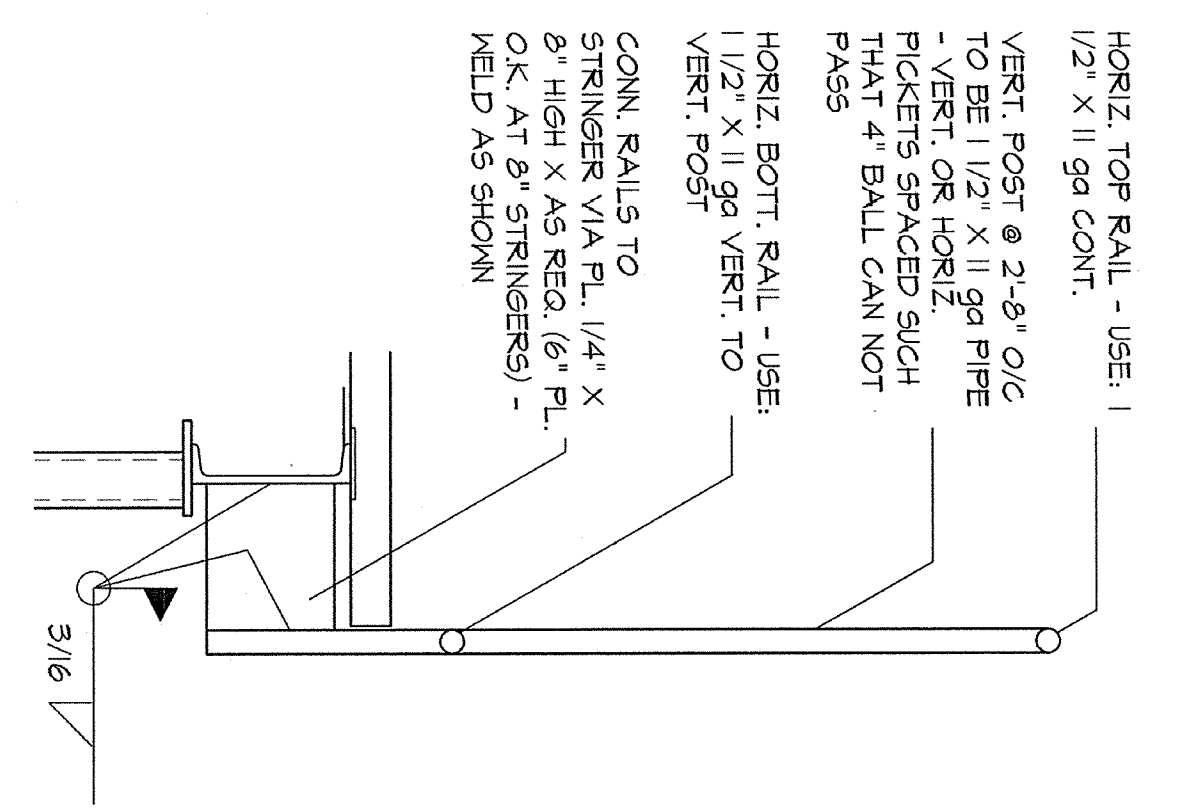
HRD ENGINEERING
STRUCTURAL DESIGN AND DRAFTING
7463 VARNA AVE., SECOND FLOOR
N. HOLLYWOOD, CA 91605
PHONE NO. (805) 431-5415 - FAX NO. (805) 888-4840

DANIELS FIELD SKATE PARK DESIGN FOR:
THE CITY OF LOS ANGELES DEPARTMENT OF RECREATION AND PARKS
BOYS & GIRLS CLUB OF SAN PEDRO
MIKE LANSING, EXECUTIVE DIRECTOR
1200 S. CABRILLO AVENUE SAN PEDRO, CA 90731
(310) 833-0807 OFFICE (310) 833-4253 FAX
SITE: 845 N. 12th STREET, SAN PEDRO, CA 90731

STRUCTURAL DETAILS



S-4
SEPTEMBER 25, 2012
RA-2002-005



13 DET. SCALE 1/4"=1'-0"

10 DET. SCALE 1/4"=1'-0"

7 DET. SCALE 1/4"=1'-0"

1 ELEV. VIEW SCALE 1/4"=1'-0"

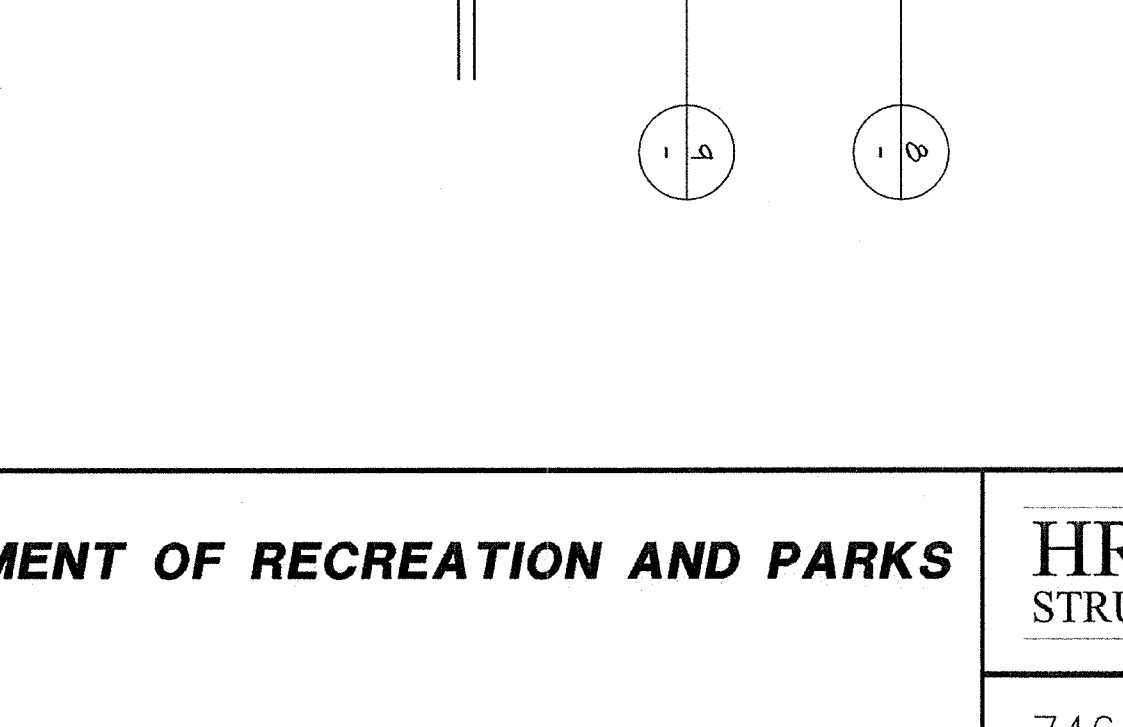
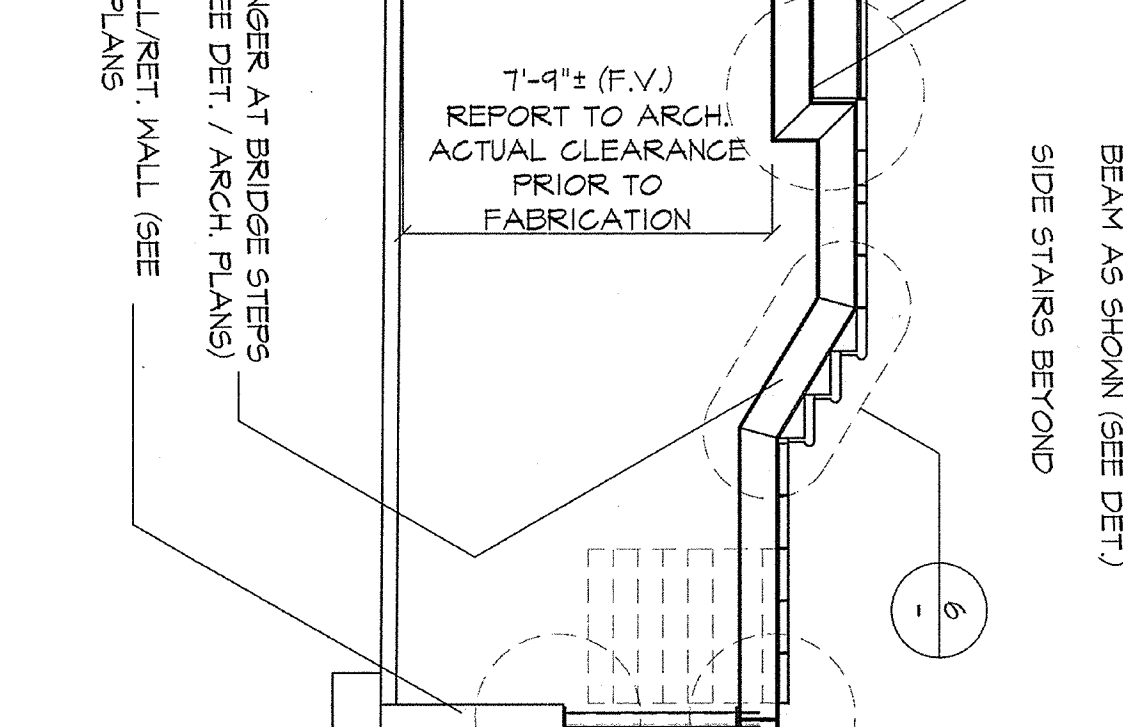
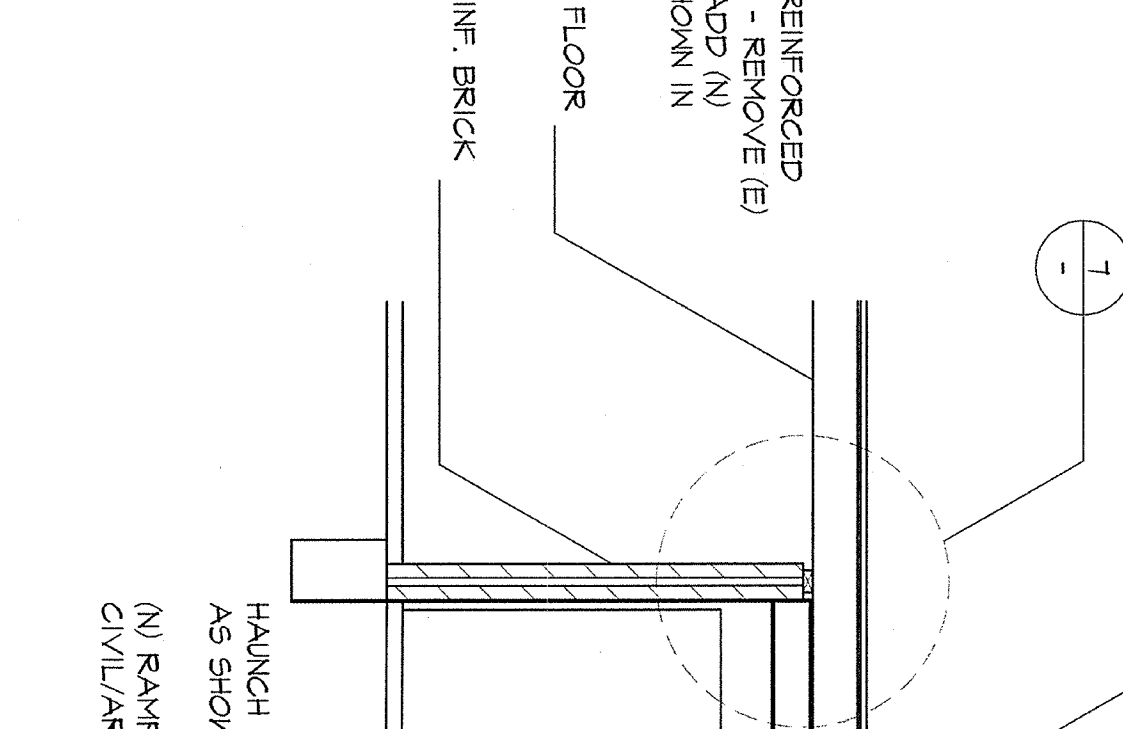
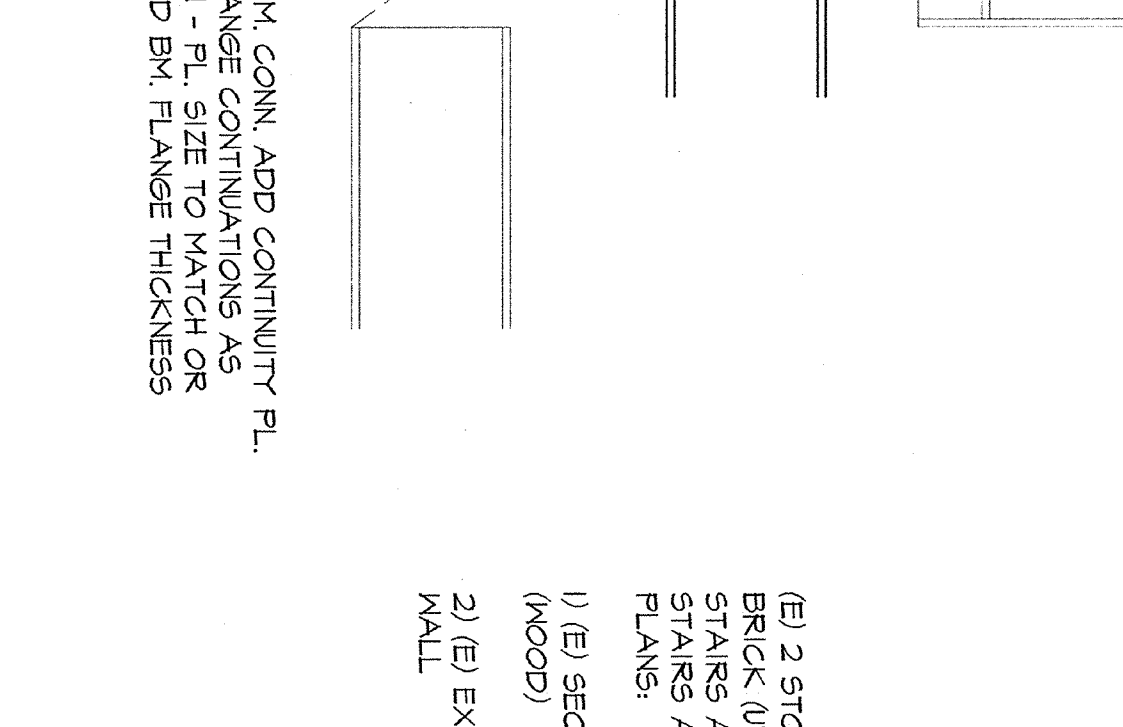
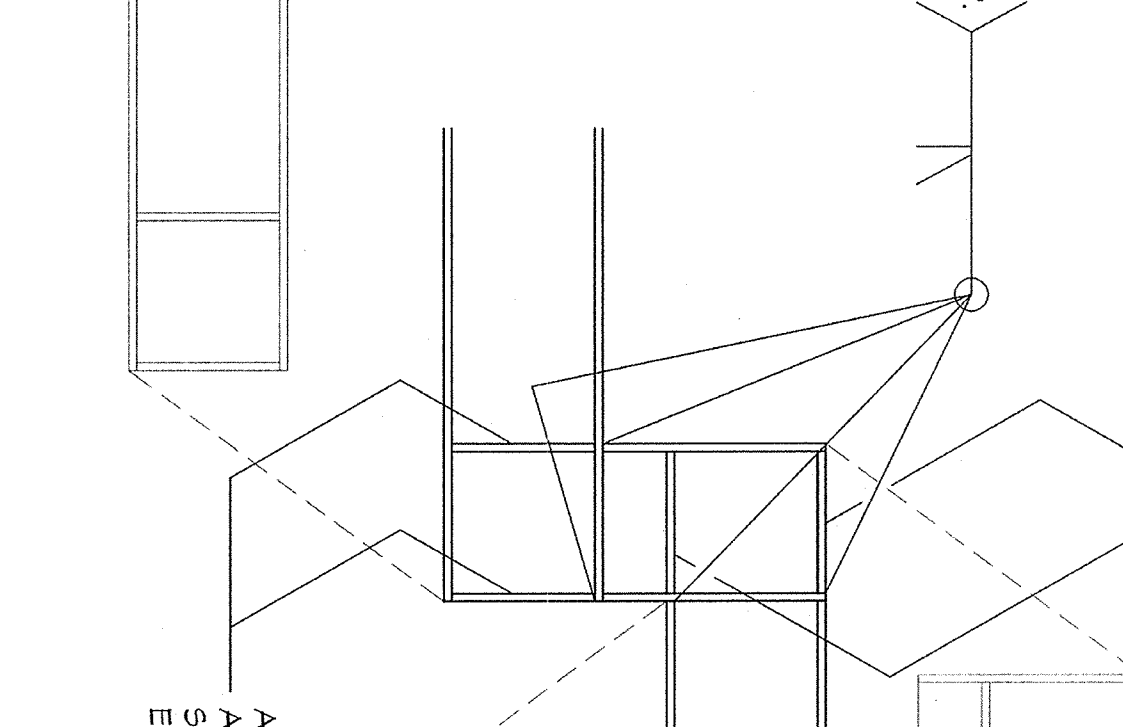
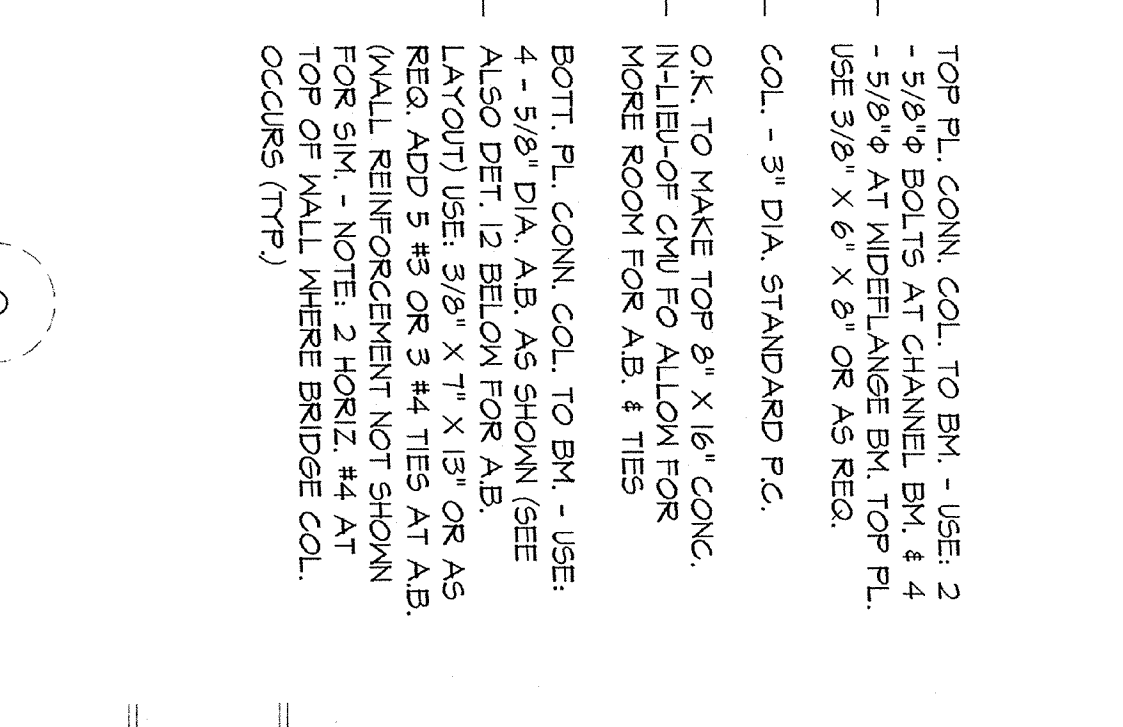
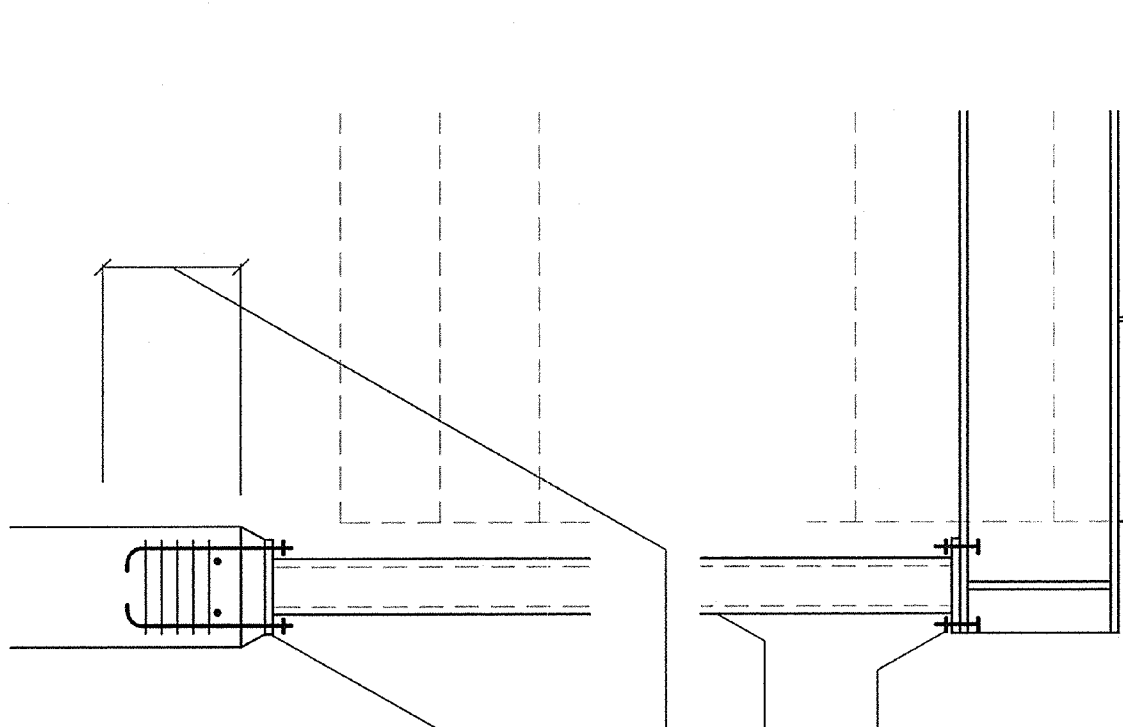
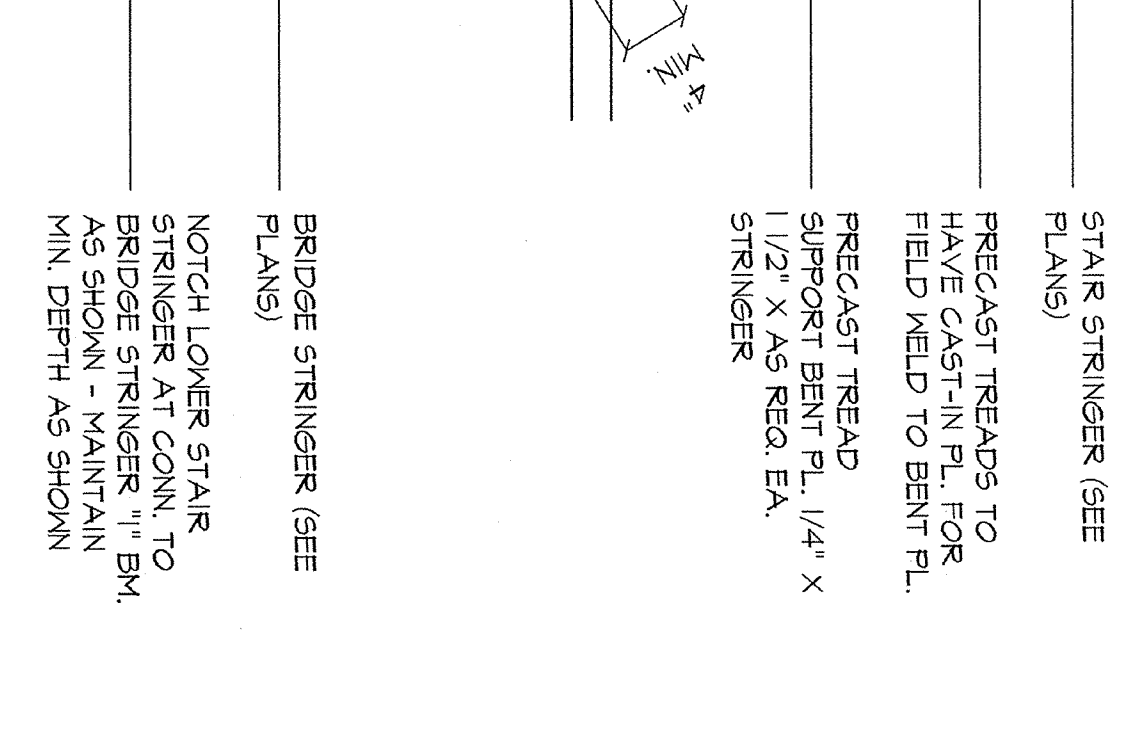
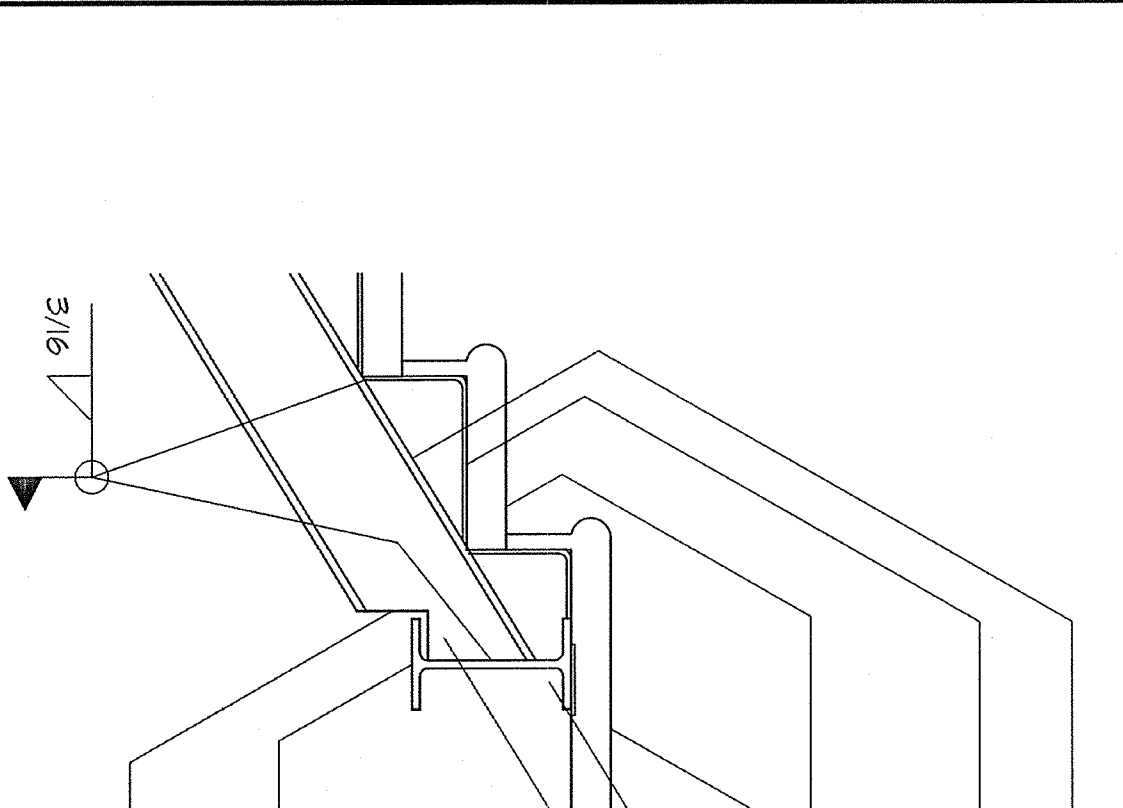
1 ELEV. VIEW SCALE 1/4"=1'-0"

1 RESTROOM/OFFICE STAIR BRIDGE FOUND. & FRAMING PLAN SCALE 1/4"=1'-0"

1 RESTROOM/OFFICE STAIR BRIDGE FOUND. & FRAMING PLAN SCALE 1/4"=1'-0"

1 RESTROOM/OFFICE STAIR BRIDGE FOUND. & FRAMING PLAN SCALE 1/4"=1'-0"

1 RESTROOM/OFFICE STAIR BRIDGE FOUND. & FRAMING PLAN SCALE 1/4"=1'-0"



11 DET. SCALE 1/4"=1'-0"

8 DET. SCALE 1/4"=1'-0"

5 DET. SCALE 1/4"=1'-0"

5 DET. SCALE 1/4"=1'-0"

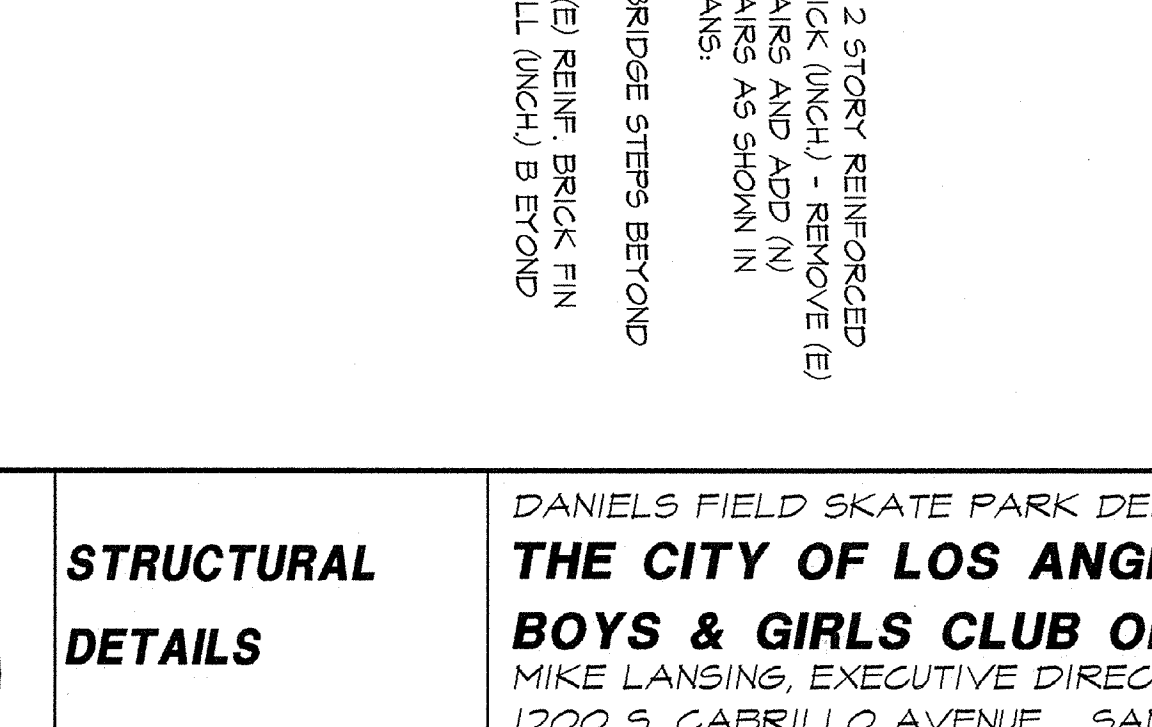
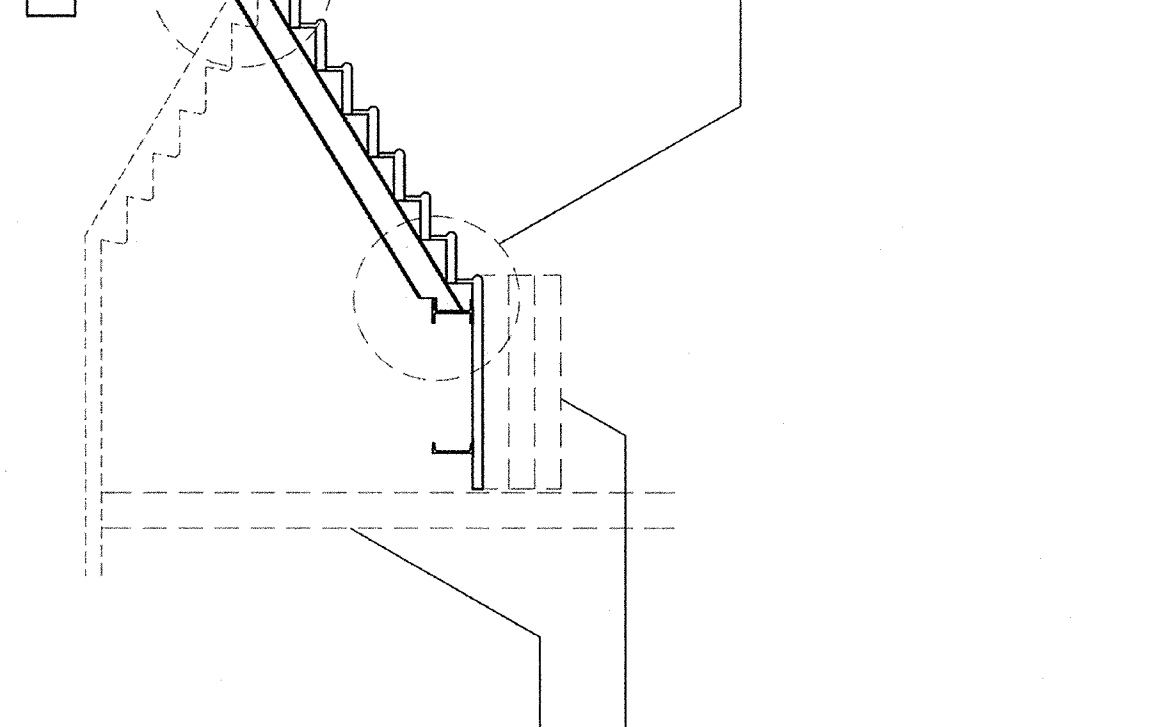
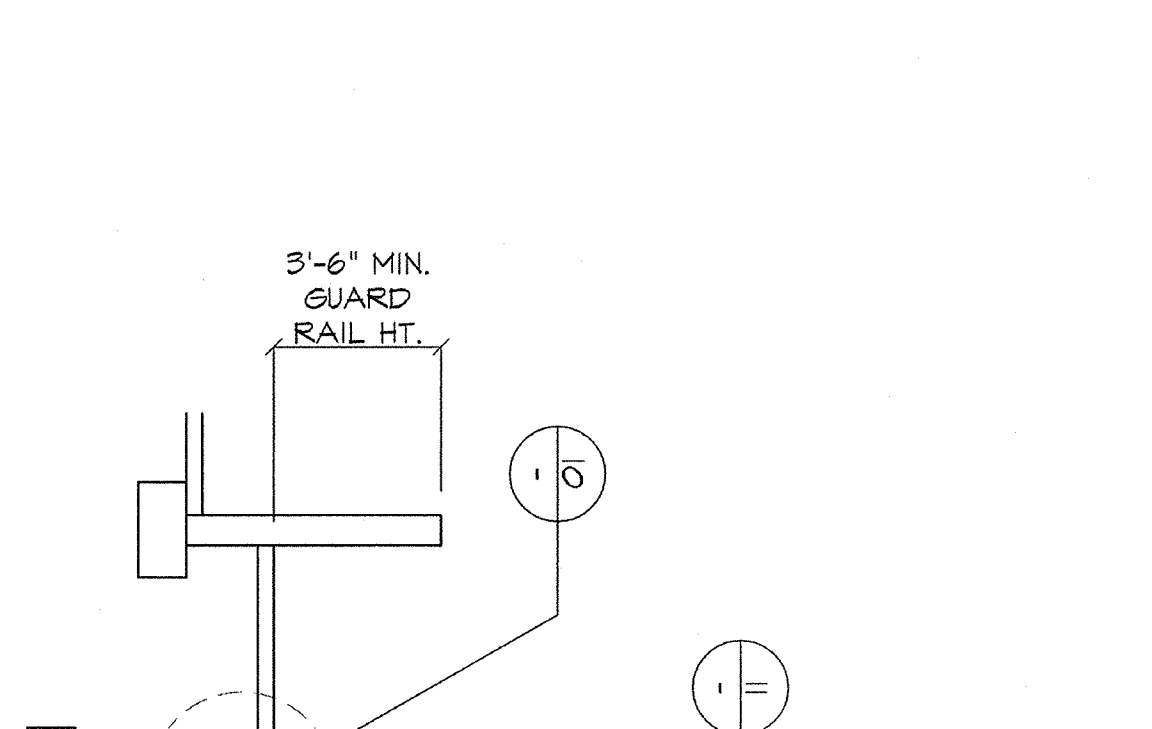
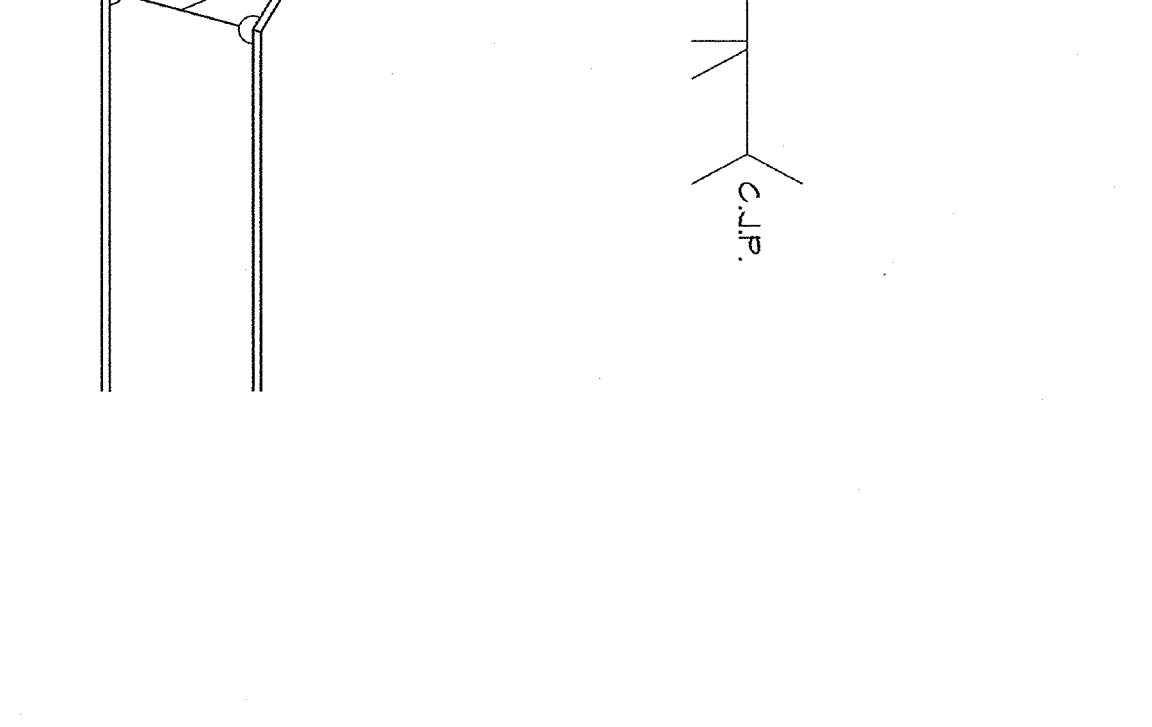
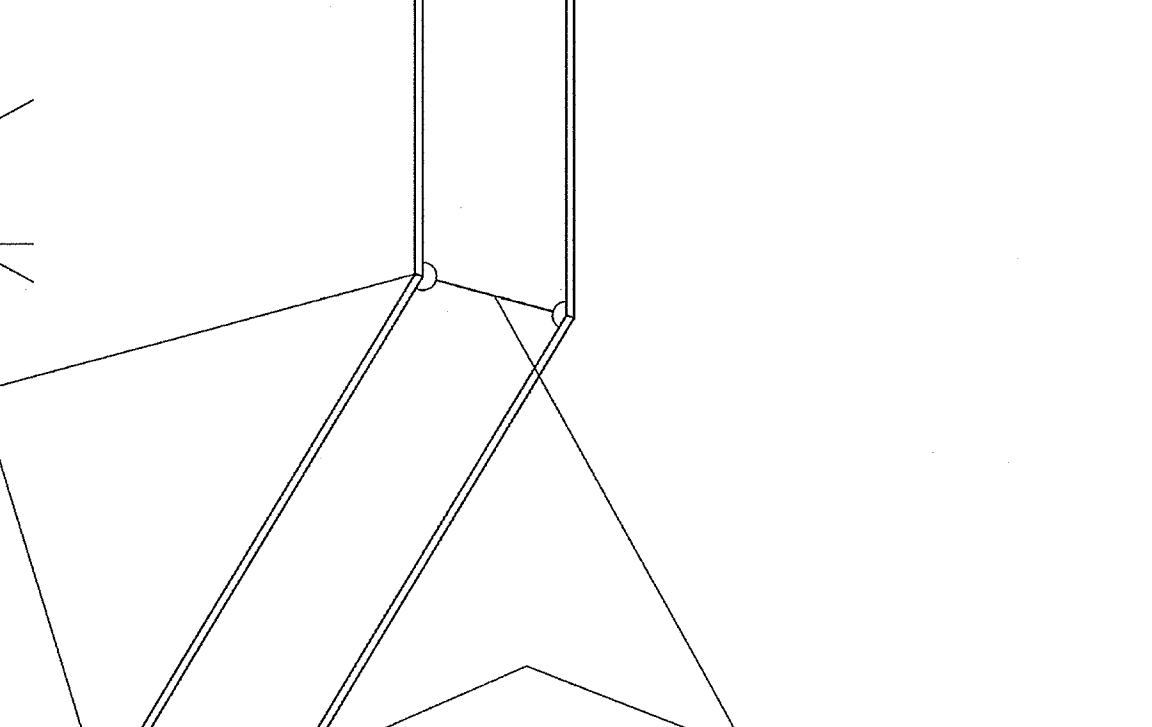
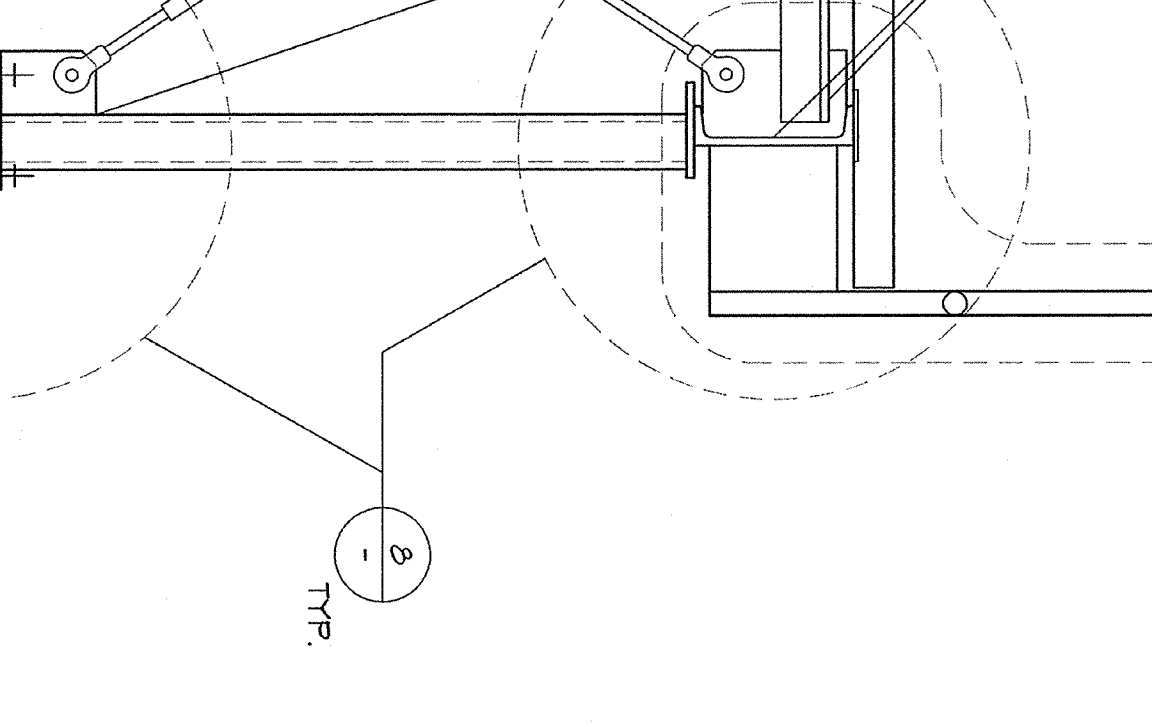
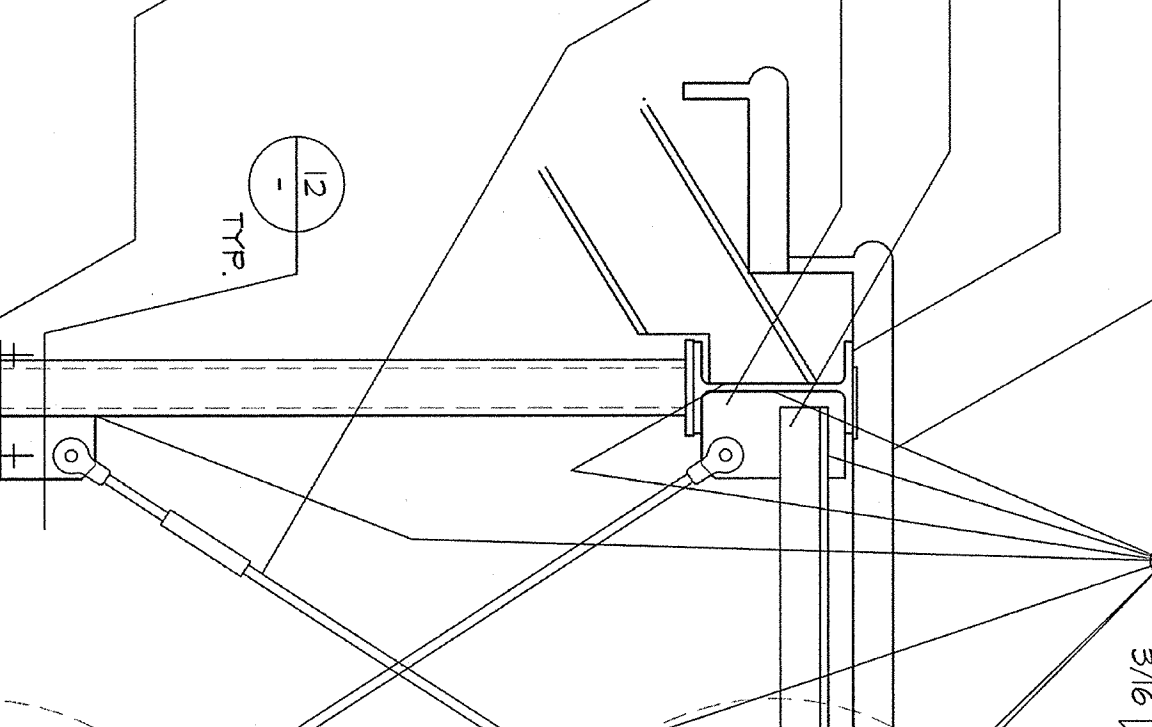
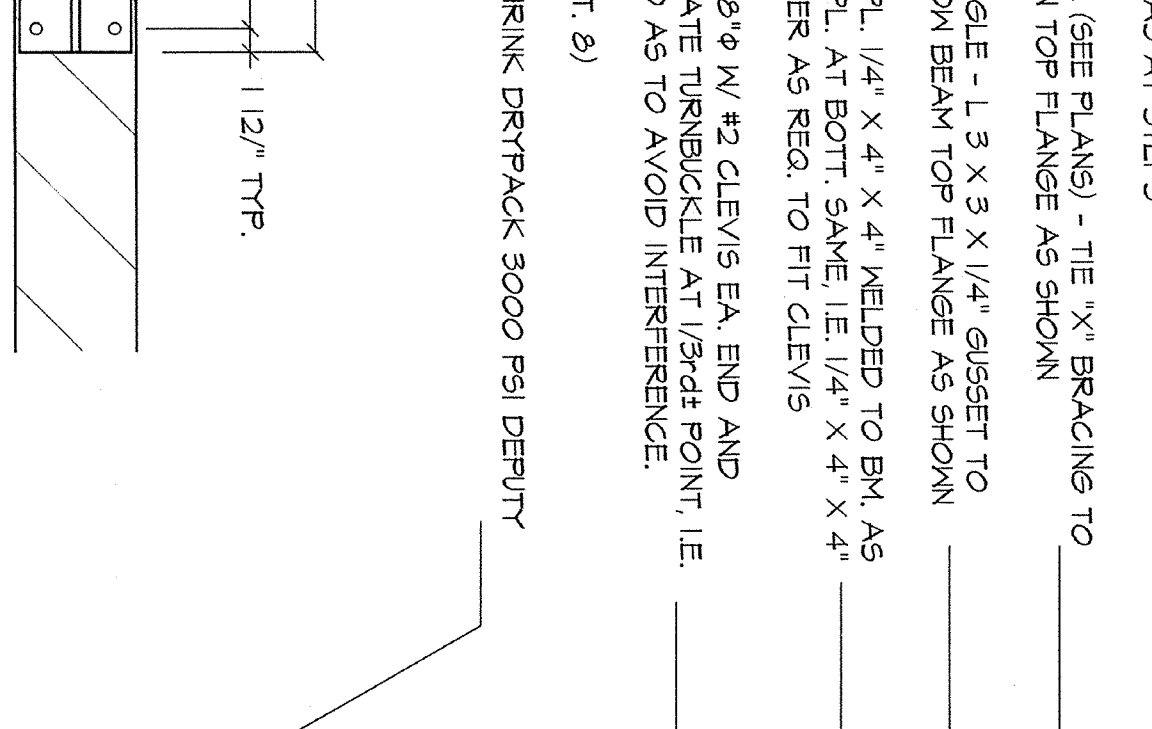
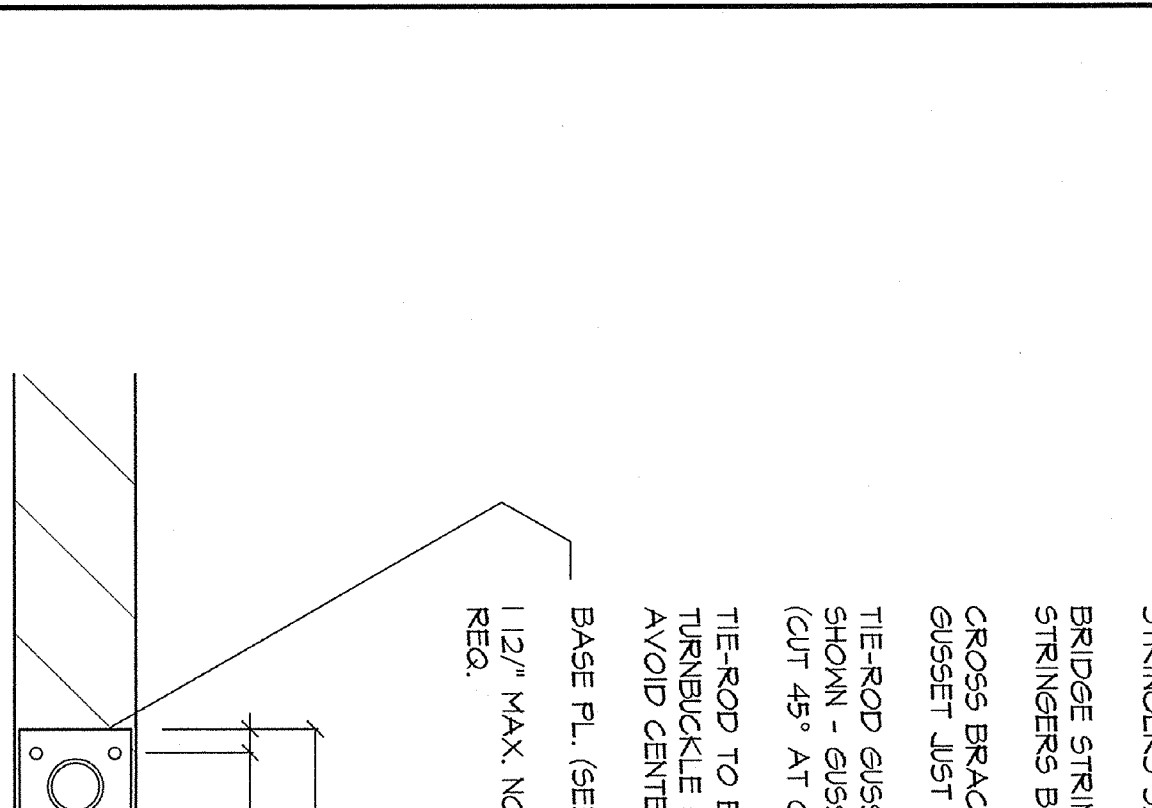
5 DET. SCALE 1/4"=1'-0"

5 DET. SCALE 1/4"=1'-0"

2 STAIR BRIDGE TRANSVERSE FRAMING SECTION SCALE 1/4"=1'-0"

2 STAIR BRIDGE TRANSVERSE FRAMING SECTION SCALE 1/4"=1'-0"

2 STAIR BRIDGE TRANSVERSE FRAMING SECTION SCALE 1/4"=1'-0"



12 DET. SCALE 1/4"=1'-0"

9 DET. SCALE 1/4"=1'-0"

9 DET. SCALE 1/4"=1'-0"

9 DET. SCALE 1/4"=1'-0"

9 DET. SCALE 1/4"=1'-0"

9 DET. SCALE 1/4"=1'-0"

3 STAIR BRIDGE TRANSVERSE FRAMING SECTION SCALE 1/4"=1'-0"

3 STAIR BRIDGE TRANSVERSE FRAMING SECTION SCALE 1/4"=1'-0"

3 STAIR BRIDGE TRANSVERSE FRAMING SECTION SCALE 1/4"=1'-0"

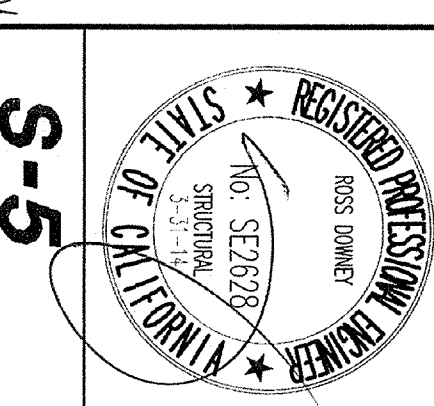
REVISIONS			
NO.	DATE	ITEM	BY

THESE PLANS, DRAWINGS, DESIGNS AND SPECIFICATIONS ARE THE SOLE PROPERTY OF HRD ENGINEERING FOR THE EXCLUSIVE USE OF THE CLIENTS FOR THIS PROJECT. ANY REUSE OR REPRODUCTION OF THESE PLANS, DRAWINGS, DESIGNS AND SPECIFICATIONS WITHOUT WRITTEN APPROVAL OF HRD ENGINEERING IS STRICTLY PROHIBITED. COPYRIGHT © HRD ENGINEERING.

HRD ENGINEERING
STRUCTURAL DESIGN AND DRAFTING
7463 VARNA AVE., SECOND FLOOR
N. HOLLYWOOD, CA 91605
PHONE NO. (805) 431-5415 - FAX NO. (805) 888-4840

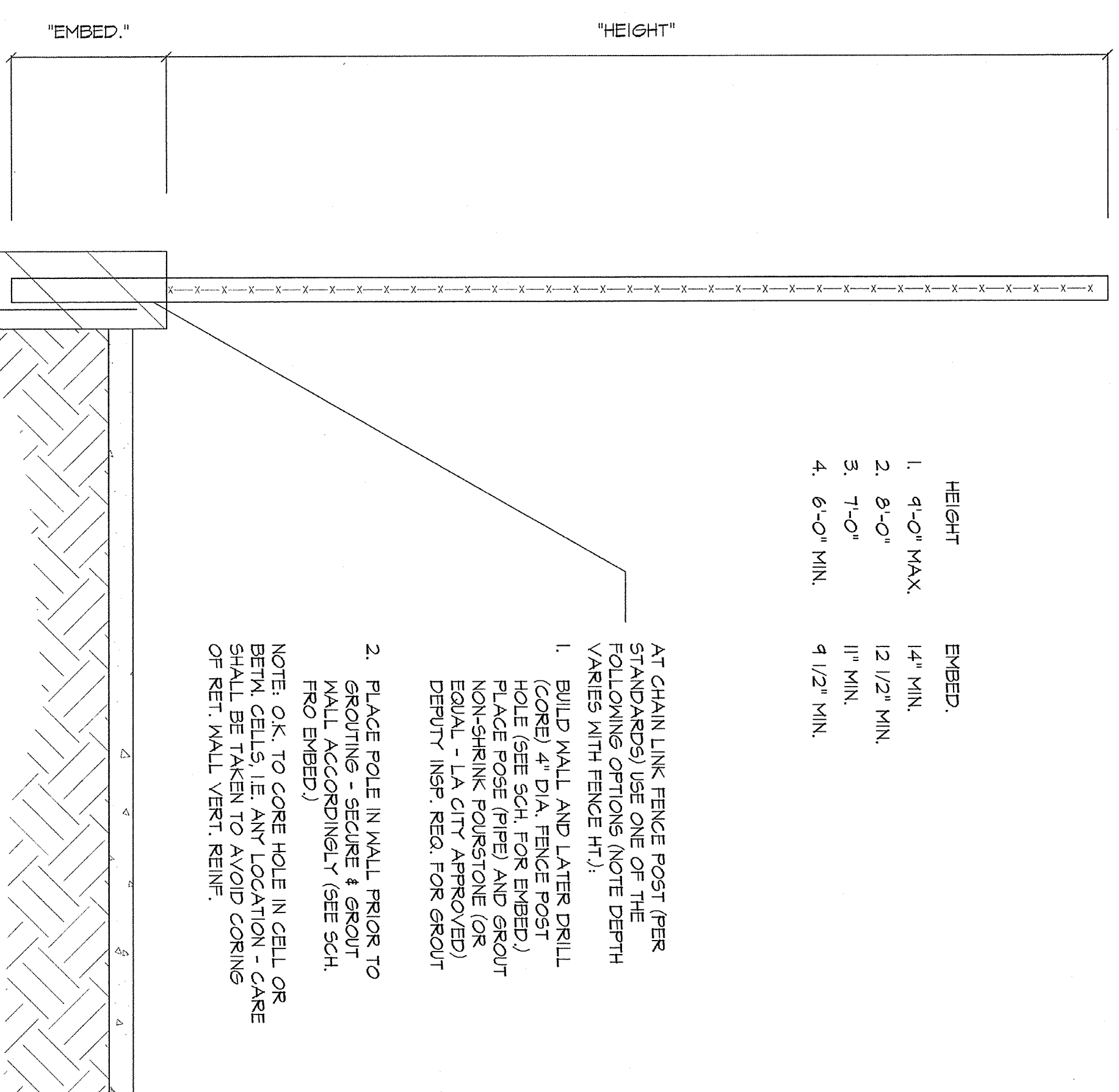
DANIELS FIELD SKATE PARK DESIGN FOR:
THE CITY OF LOS ANGELES DEPARTMENT OF RECREATION AND PARKS
BOYS & GIRLS CLUB OF SAN PEDRO
MIKE LANSING, EXECUTIVE DIRECTOR
1200 S. CABRILLO AVENUE SAN PEDRO, CA 90731
(310) 833-0807 OFFICE (310) 833-4253 FAX
SITE: 845 W. 12th STREET, SAN PEDRO, CA 90731

STRUCTURAL DETAILS



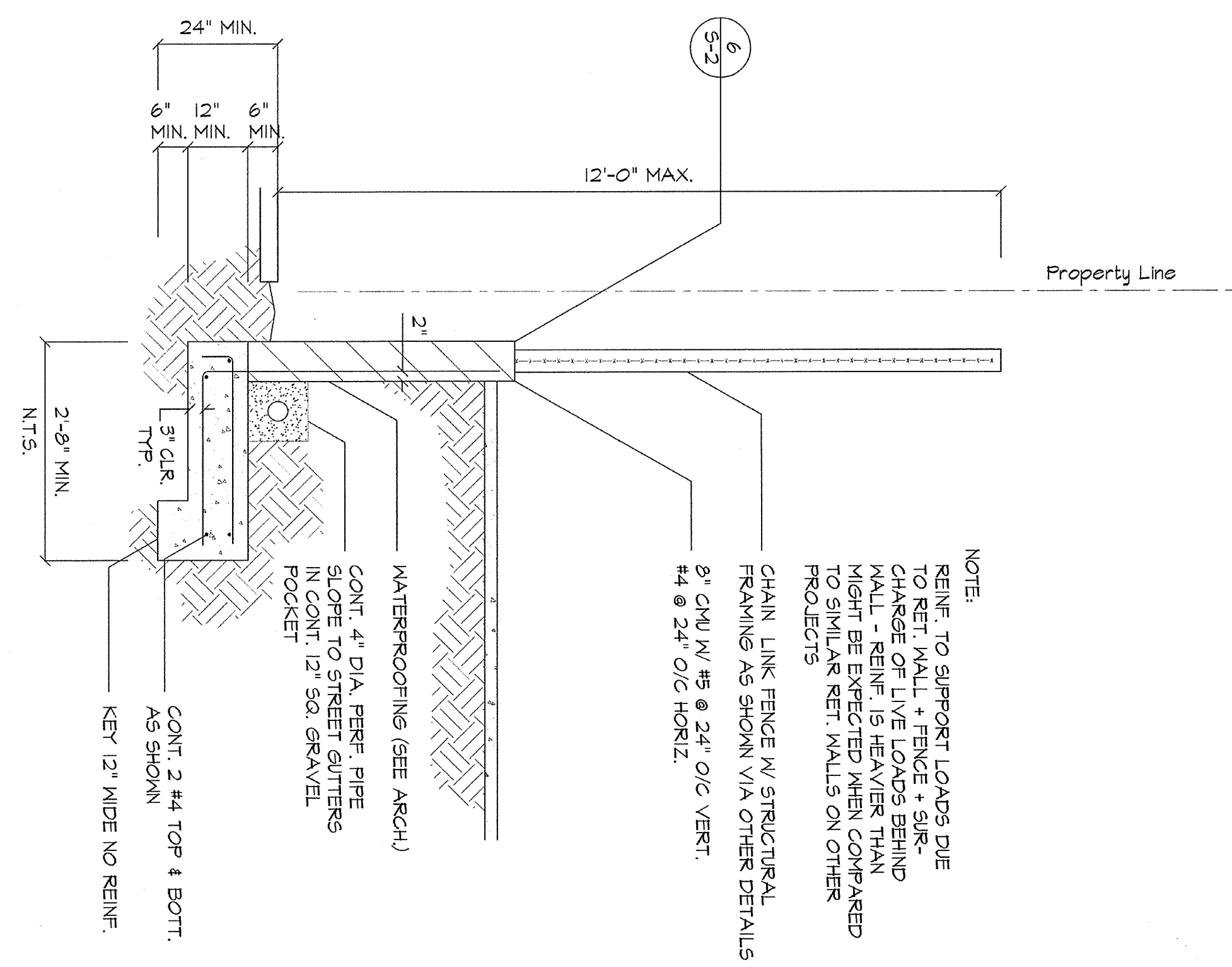
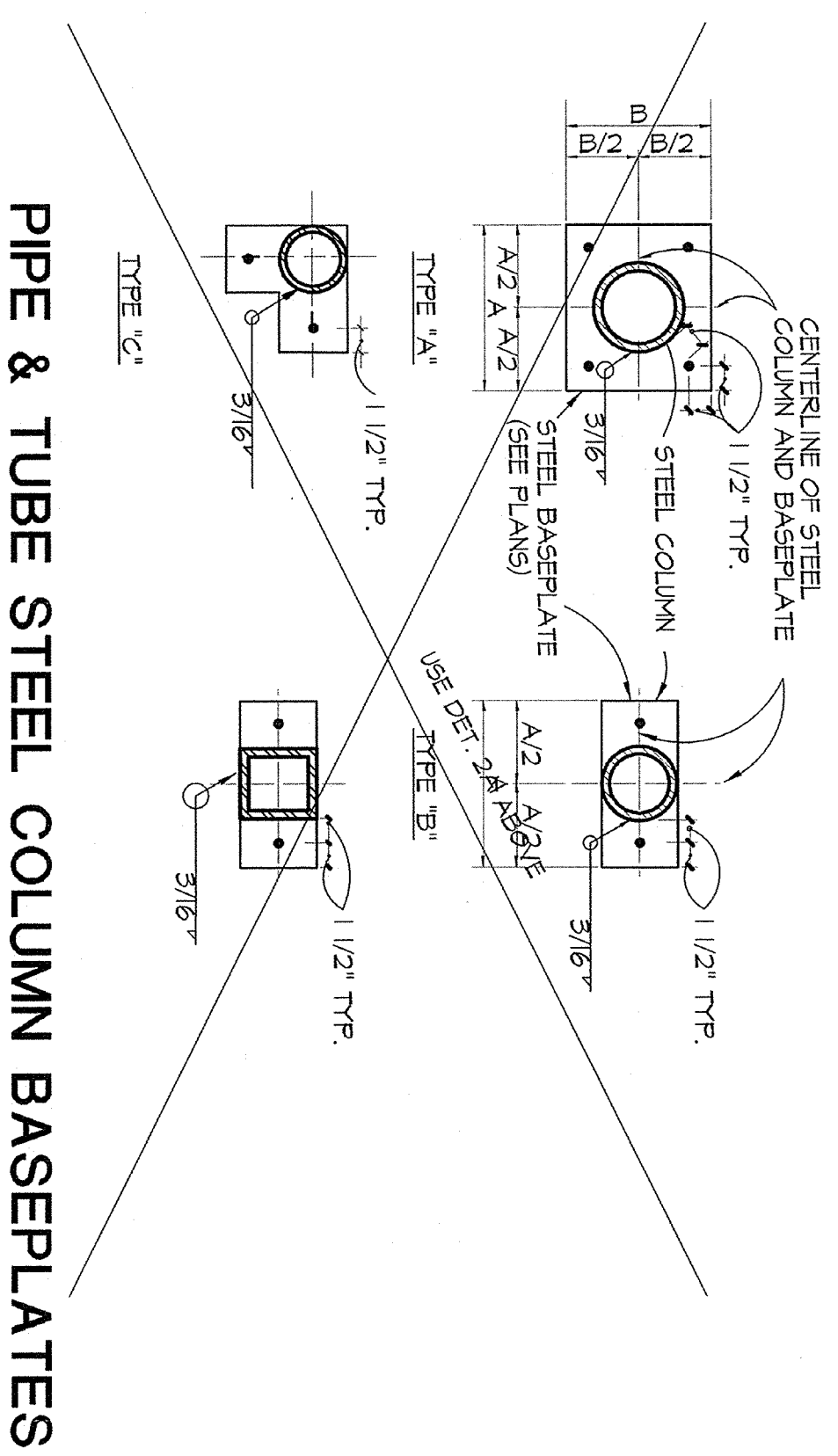
SEPTEMBER 25, 2012
RA-2002-005

HRD ENGINEERING, ROSS DOWNER, ENGINEER, EXPRESSLY RESERVE THEIR COMMON LAW COPYRIGHT AND OTHER PROPERTY RIGHTS IN THESE PLANS. THESE PLANS ARE NOT TO BE REPRODUCED, COPIED, OR COMPILED IN ANY FORM OR MANNER WHATSOEVER, FOR ANY PURPOSE, WITHOUT THE WRITTEN PERMISSION AND CONSENT OF HRD ENGINEERING. ROSS DOWNER, ENGINEER, SHOULD UNAUTHORIZED RE-USE BY A THIRD PARTY OCCUR, HRD ENGINEERING, ROSS DOWNER SHALL BE HELD HARMLESS.

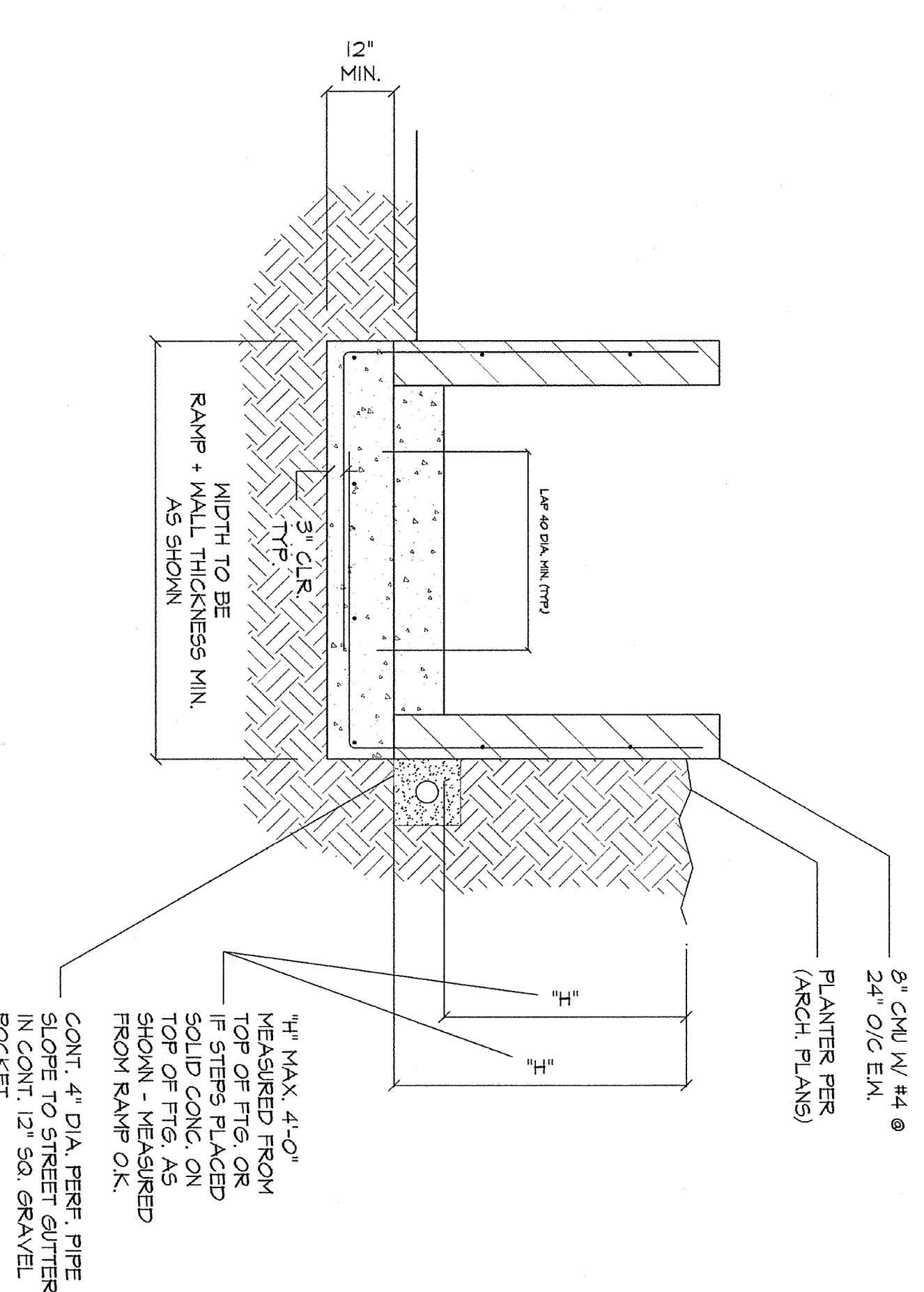


5 FENCE POLE AT FTG. CONN. DETAIL
SCALE 1/2"=1'-0"

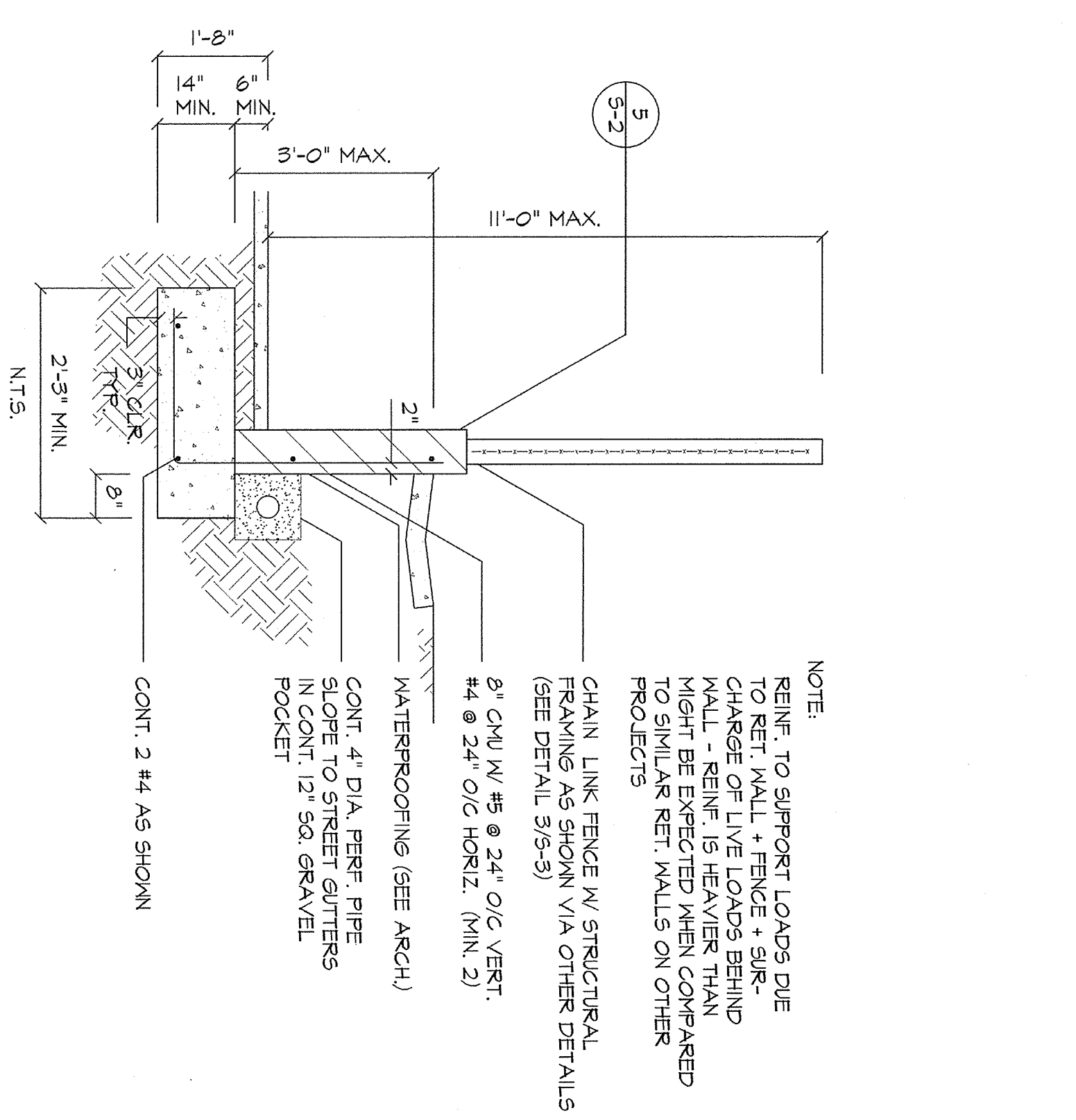
6 BASE PLATE DETAIL
SCALE 1/2"=1'-0"



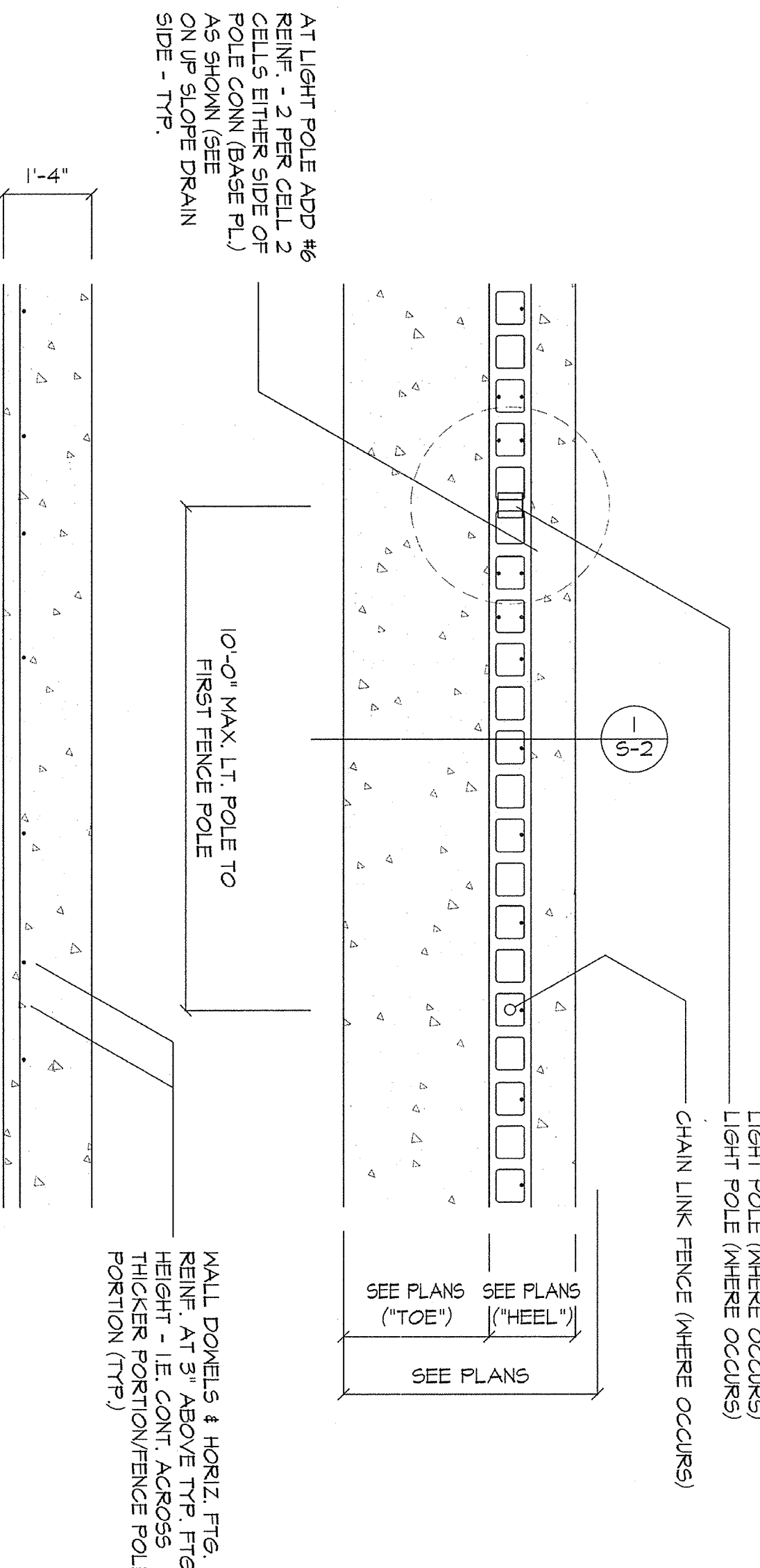
3 RET. WALL DETAIL - STREET (HEEL FOOTING)
SCALE 1/2"=1'-0"



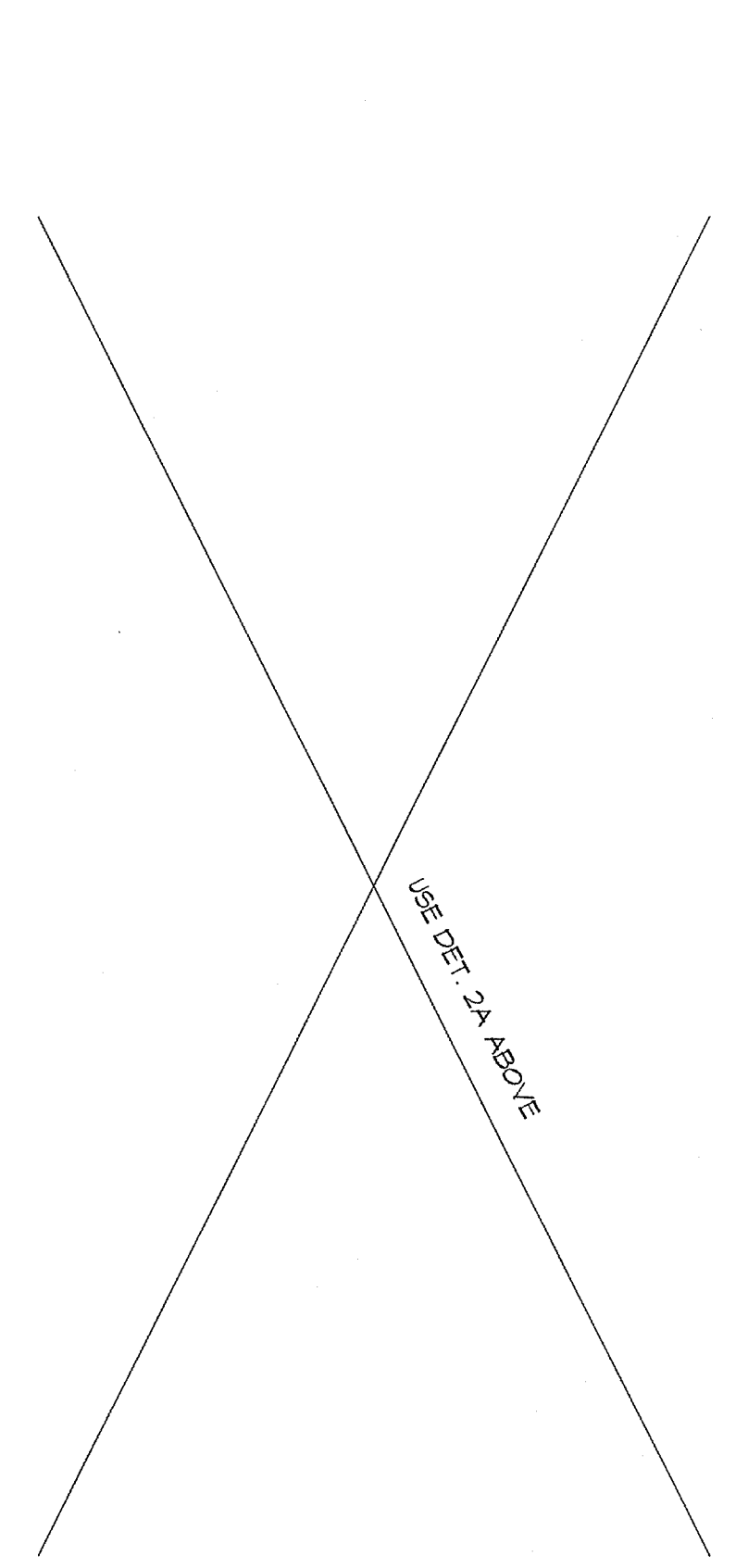
4 RET. WALL DETAIL - RAMP
SCALE 1/2"=1'-0"



1 RET. WALL DETAIL - REAR (TOE FOOTING)
SCALE 1/2"=1'-0"



2A REAR (TOE) CONDITION



2B STREET (HEEL) CONDITION

2 FENCE POLE PORTION - PLAN VIEW
SCALE 1/2"=1'-0"

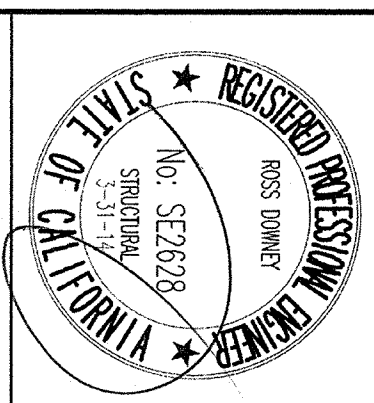
REVISIONS		
NO.	DATE	BY

HRD ENGINEERING
STRUCTURAL DESIGN AND DRAFTING

7463 VARNA AVE., SECOND FLOOR
N. HOLLYWOOD, CA 91605
PHONE NO. (805) 431-5415 - FAX NO. (805) 888-4840

DANIELS FIELD SKATE PARK DESIGN FOR:
THE CITY OF LOS ANGELES DEPARTMENT OF RECREATION AND PARKS
BOYS & GIRLS CLUB OF SAN PEDRO
MIKE LANSING, EXECUTIVE DIRECTOR
1200 S. CABRILLO AVENUE SAN PEDRO, CA 90731
(310) 833-0807 OFFICE (310) 833-4253 FAX
SITE: 845 W. 12th STREET, SAN PEDRO, CA 90731

STRUCTURAL DETAILS



S-2
SEPTEMBER 25, 2012
RA-2002-005